



WHAT TO BRING TO SCHOOL

KEY CHANGE FOR SEPTEMBER

There is a requirement to have set classroom equipment each day (outlined below) in a clear, see through pencil case. Therefore, students should not come to College with pencil cases which are non-see through in September.

CLASSROOM EQUIPMENT THAT STUDENTS SHOULD HAVE EVERY DAY

- A secure, named waterproof dark coloured bag capable of carrying everything required.
- A suitable waterproof coat for bad weather (see Uniform and Personal Appearance). Coats should be worn over the jumper.
- 3 pens: 2 for writing - blue or black only. A purple pen for completing feedback on teacher's marking.
- A highlighter.
- A pencil, an eraser and a ruler.
- A ruler and protractor for Maths – (a compass will be provided by the College in Maths lessons).
- A clear see-through pencil case capable of holding the above.
- A calculator (available from the Accounts Office at a discount price).
- Coloured pencils (or felt tips), if possible.

A READING BOOK

This book must be an accelerated reader book and should be of a suitable reading age within the students AR profile.

STUDENT PLANNER

The Student Planner should be carried by students at all times during the College day and must be placed on desks at the start of each lesson and presented to a member of College staff if they request it. Student Planners will be given out at the start of each term by the tutor.



UNIFORM AND PERSONAL APPEARANCE WHAT TO WEAR

Our uniform is designed to instil a sense of pride and belonging for our students. It also presents a positive image of our college and students, to both the local and wider community. All students in Years 7 to 11 are expected to wear our uniform correctly.



UNIFORM QUESTIONS

In any circumstances where there is a question about the suitability of any item of uniform or the personal appearance of a student's then the Principal's decision will be final.

All items of College uniform must be worn correctly. Any non-uniform items will be confiscated for the day if worn.

COLLEGE SWEATER

Navy V-neck, with crest from approved supplier. Jumpers must be worn at all times unless students are given permission not to by a member of staff. The hem of the jumper must be visible.

TROUSERS

Banner Signature trousers — Contemporary or Classic fit
For more information [click here](#)



SKIRTS

Banner Designer pleated skirt — Contemporary or Classic fit
For more information [click here](#)

TIE

The tie must have the correct coloured stripe for your child's relevant year group and be worn with 5 stripes below the knot.

SHIRT

A plain white shirt or blouse with tailored collar, buttoned to the neck with the top button done up, which must be tucked into trousers or skirt at all times. Shirts must not be rolled up to avoid any exposure of the back or torso.

SHOES

Leather or synthetic leather, all black flat shoes with no other colours, which can be polished.

SOCKS

Plain black without logos, not above the knee and not below the ankle. Black, opaque tights without extra socks worn.

BAG & COAT

All students must have a bag for books/kit and a coat - both of which must be plain, dark coloured and waterproof.

OTHER REQUIREMENTS REGARDING APPEARANCE

HAIR: Hair must be neat and tidy in a conventional style and of a colour that appears natural. We would like to remind parents and carers that we do not allow students to have their hair cut below a grade 1 or to have very extreme differences in hair length, for example tramlines, skin fades and mullets are not allowed.

MAKE UP: No make-up may be worn by any student in Years 7-11 (This includes: false eyelashes, false nails and painted eyebrows, none of which are allowed).

JEWELLERY: No jewellery may be worn except for one small stud in each lower ear lobe. Students will be asked to remove any other jewellery which will be kept safe for them by staff during the remainder of the day on the first occasion and five days on the second occasion and thereafter.

SMART WATCHES: are not recommended and if brought in is at your own risk. Students are not allowed to use the functionality of Smart Watches such as text messaging whilst on the College site, including before the start and at the end of the day.



BRACELETS & NECKLACES: No bracelets / necklaces may be worn (except Medicare).

BODY PIERCING: No body piercing is allowed.

WHAT NOT TO WEAR

- Canvas, open toed or backless shoes
- Leggings, jeggings or jeans (*black ECC leggings from the uniform suppliers can be worn in PE lessons only as an optional kit item*)
- Denim jackets
- Leather jackets
- Tube skirts
- Jeans, flared trousers, chinos, combat trousers. Trousers with rivets or studs, drain pipe or low waist trousers.
- Hoodies, including zip up hoodies or similar articles that could act as external coats. (*PE hoodies are only to be worn in PE lessons*)
- Socks that are any other colour than black
- Socks worn over tights
- Tracksuits
- Boots or trainers (except for PE)
- Hats, except if medical reasons documented to the College
- Sunglasses
- No tattoos or body art

Some items listed above will be kept safe for students by staff during the remainder of the day if worn.



PE KIT

The following kit is required for ALL students:

- Purple college T- shirt
- Black College shorts or Plain Black similar style
- Long black football socks
- Short black trainer socks (indoor/summer lessons)
- Training shoes (with non-marking soles)
- Boys/Girls attending practices and fixtures for rugby and football might also need:
- Football boots

TYPE OF BOOT		NOT PERMITTED	TYPE OF BOOT		PERMITTED
SCHOOL SHOES			ROUND MOULDED STUDS		
TRIANGULAR CLEATS			ASTRO TURF TRAINER		
BLADES			NORMAL RUNNING SHOES (not ideal but acceptable)		
CIRCULAR SCREW-IN STUDS					
ALUMINIUM RUGBY SAFETY STUDS					

The following kit is optional:

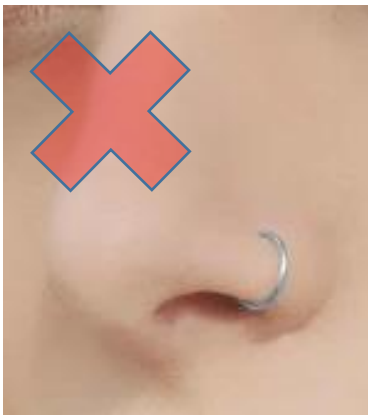
- Football boots
- Black tracksuit trouser
- Approved black ECC leggings from the uniform suppliers
- Black College rain jacket
- Black base layer
- Black College skort or Plain Black similar style
- Black College ¼ Zip Top
- Blue college exam T shirt - KS4 only



Due to building works and a reduction in changing rooms, students are allowed to wear PE kit to school only on the day(s) that they have timetabled PE (this does not include clubs or fixtures).

Please note that students will need to change for Drama and Dance in College and therefore should wear uniform on the days they have these subjects.

COMMON UNIFORM MISTAKES



Nose piercing



Black leggings (*worn with normal uniform*)



White socks