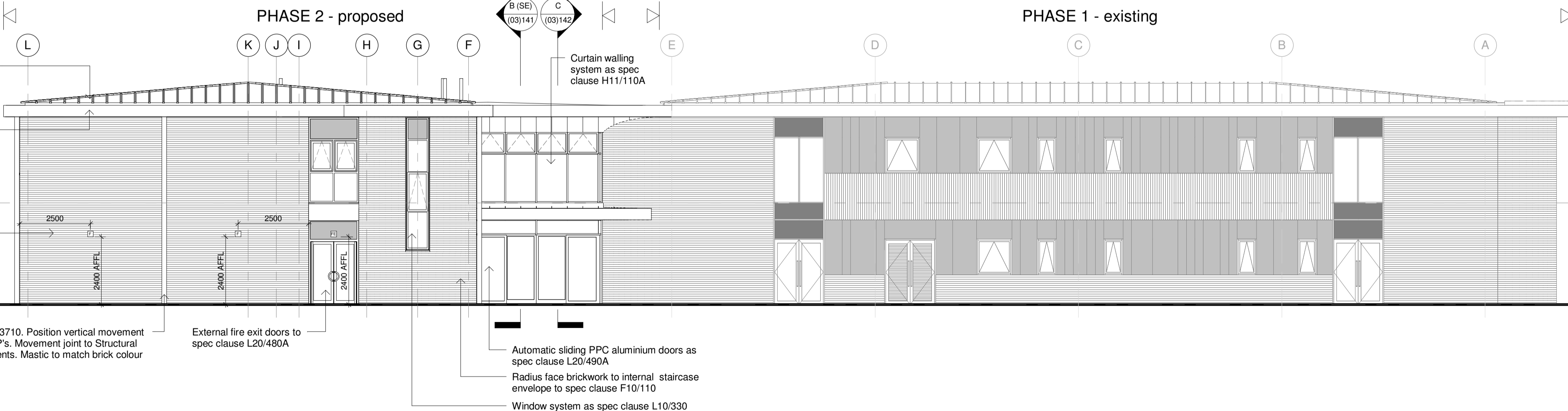


West Elevation

1 : 100

Refer to architects GA floor plans and plan details for the horizontal setting out and detail sections for the vertical setting out. Any anomalies to be reported prior to commencing the works.



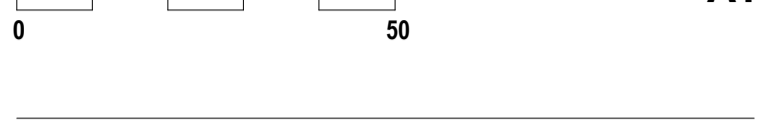
North Elevation

1 : 100

Refer to architects GA floor plans and plan details for the horizontal setting out and detail sections for the vertical setting out. Any anomalies to be reported prior to commencing the works.

COMPOSITE CLADDING PANEL SCHEDULE			
Panel Ref.	Size (H) mm	Size (W) mm	Colour Ref.
A1	1930	572	A21.5.4
A2	1930	585	A22.1.6
A3	1930	878	A33.3.6
A4	1930	306	A22.1.6
A5	1930	306	A21.5.4
A6	1930	612	A17.3.5
A7	1930	612	A22.1.6
A8	1930	306	A10.1.8
A9	1930	612	A12.3.7
A10	1930	306	A37.0.8
A11	1930	306	A17.3.5
A12	1930	612	A41.0.6
A13	1930	333	A33.3.6
A14	1930	333	A17.3.5
A15	1930	667	A22.1.6
A16	1930	340	A21.5.4
A17	1930	613	A12.3.7
A18	1930	313	A37.0.8
A19	1930	563	A41.0.6
A20	1930	281	A12.3.7
A21	1930	563	A33.3.6
A22	1930	281	A10.1.8
A23	1930	563	A21.5.4
A24	1930	281	A22.1.6
A25	1930	563	A04.1.7
A26	1930	288	A17.3.5
A27	1930	563	A12.3.7
A28	1930	844	A10.1.8
A29	1930	272	A41.0.6
A30	1930	279	A04.1.7
A31	1930	554	A12.3.7
A32	1930	595	A10.1.8
A33	690	1340	A11.8.0
B1	1950	572	A11.8.0
B2	1950	291	A21.5.4
B3	1950	581	A22.1.6
B4	1950	581	A17.3.5
B5	1950	911	A37.0.8
B6	1950	307	A12.3.7
B7	1950	307	A33.3.6
B8	1950	614	A21.5.4
B9	1950	307	A22.1.6
B10	1950	614	A41.0.6
B11	1950	614	A22.1.6
B12	1950	307	A21.5.4
B13	1950	656	A17.3.5
B14	1950	328	A10.1.8
B15	1950	656	A33.3.6
B16	1950	328	A22.1.6
B17	1950	610	A04.1.7
B18	1950	275	A33.3.6
B19	1950	550	A37.0.8
B20	1950	854	A41.0.6
B21	1950	283	A12.3.7
B22	1950	283	A22.1.6
B23	1950	567	A17.3.5
B24	1950	281	A04.1.7
B25	1950	563	A10.1.8
B26	1950	290	A12.3.7
B27	1950	290	A37.0.8
B28	1950	871	A04.1.7
B29	1950	573	A10.1.8
B30	1950	575	A04.1.7
B31	1950	289	A10.1.8
B32	1950	585	A12.3.7
B33	500	1340	A11.8.0
C1	700	2365	A11.8.0
C2	700	1336	A11.8.0
C3	700	2345	A11.8.0
C4	700	1135	A11.8.0
C5	1220	1135	A17.3.5
C6	700	2345	A11.8.0
C7	700	1336	A11.8.0
C8	700	2338	A11.8.0
C9	700	1135	A11.8.0
C10	1220	1135	A17.3.5
C11	700	2347	A11.8.0
C12	700	1336	A11.8.0
C13	700	2345	A11.8.0
C14	700	1135	A11.8.0
C15	1220	1135	A17.3.5
C16	700	2345	A11.8.0
C17	700	1336	A11.8.0
C18	700	2365	A11.8.0
D1	700	2365	A11.8.0
D2	700	1336	A11.8.0
D3	700	2345	A11.8.0
D4	700	1135	A11.8.0
D5	1220	1135	A17.3.5
D6	700	2345	A11.8.0
D7	700	1336	A11.8.0
D8	700	2340	A11.8.0
D9	700	1135	A11.8.0
D10	1220	1135	A17.3.5
D11	700	2345	A11.8.0
D12	700	1336	A11.8.0
D13	700	2345	A11.8.0
D14	700	1135	A11.8.0
D15	1220	1135	A17.3.5
D16	700	2345	A11.8.0
D17	700	1336	A11.8.0
D18	700	2365	A11.8.0
E1	688	1684	A12.3.7
E2	688	1230	A10.1.8
E3	688	1190	A12.3.7
E4	688	1190	A10.1.8
E5	688	1190	A04.1.7
E6	688	1190	A37.0.8
E7	688	1190	A41.0.6
E8	688	1190	A04.1.7
E9	688	1190	A41.0.6
E10	688	1190	A33.3.6
E11	688	1190	A37.0.8
E12	688	1190	A22.1.6
E13	688	1190	A33.3.6
E14	688	1190	A21.5.4
E15	688	1190	A22.1.6
E16	688	1190	A17.3.5
E17	688	1230	A21.5.4
E18	688	1692	A17.3.5

Responsibility is not accepted for others scaling from this drawing. Do not scale from this drawing use written dimensions only



KEY PLAN

This drawing is produced for use in this project only and may not be used for any other purpose. NPS Property Consultants Ltd accept no liability for the use of this drawing other than the purpose for which it was intended in connection with this project as recorded on the title block fields 'Purpose of Issue' and 'File Status Code'. This drawing may not be reproduced in any form without prior written agreement. Crown Copyright & Database Rights (2014) Ordnance Survey (100019567)

NOTES

Revision	Description	Date
P1	Tender issue	27/01/2017

REV	DRAWN	DATE	CHECKED	DATE	APPROVED	DATE

nps group
 NPS South West LTD
 Venture House, 1 Capital Court, Sowton Industrial Estate, Exeter EX2 7LW
 TEL: 01392 351000 EMAIL: exeter@venturehouse.nps.co.uk WEB: www.nps.co.uk

CLIENT
Exmouth Community College

PROJECT
**Exmouth Community College
 New Class Block
 Phase 2**

TITLE
Proposed West & North Elevations

SCALE	DISCIPLINE	PROJECT NR
1 : 100	Architecture	17-1-1050

FILE / DRAWING NAME	REV CODE
NPS-DR-A(04)100	P1

STATUS CODE	PURPOSE OF ISSUE	DRAWN
D2	Tender	NRS