



Exmouth
Community
College



Sixth Form Course Guide

2026-2027

WELCOME

WELCOME to Sixth Form at Exmouth Community College



A very warm welcome to this year's Sixth Form Course Guide. We are delighted to be able to showcase the Sixth Form at Exmouth Community College, whether you are currently a Year 11 student at ECC or if it is your first time learning about us.

This is a particularly exciting time for our Sixth Form. We host a really wide range of courses at Level 2 and 3; students are benefitting from a brand new Sixth Form Centre, including dedicated all-day Sixth Form Cafe, study and social areas; and we are continuing to develop the Sixth Form experience with a range of new opportunities, such as our Electives Programme, trips and visits (including far flung parts of the globe), Work Experience and Student Leadership.

We are delighted with the engagement of our students and the feedback that they share about their experience. This was endorsed by OFSTED when they visited us in February 2024, judging Sixth Form provision as 'Good' overall, with some very significant strengths. We're continuing to work really hard to give our students the best experience we can, in an environment that they know and trust, and which enables them to go on to exciting next steps.

I see Sixth Form provision as a real centrepiece of the school. It acts as the launchpad for students in entering their adult lives and offers so much back to the school. The Sixth Form experience should enable our students to develop the character and life skills and to take the opportunities and face the challenges of life. Part of this is about putting Sixth Form at the centre of the school and in giving our students the opportunity to play a genuine leadership role.

Choosing Exmouth Sixth Form is a very significant decision. We will work tirelessly to give every one of our students the very best experience possible. We will communicate regularly with parents and carers and invite you to be in touch with us so that we can work in close partnership to support your children through an exciting, yet challenging time in their lives. Through us all working together, as staff, families and Governors, we can continue the great work to build a College that caters so brilliantly for its community and prepares our young people for their future.

Tom Inman
Headteacher

Mr Dyer, Assistant Headteacher, Head of Sixth Form

I am proud to lead the Sixth Form at Exmouth Community College. As a former teacher here, I remember that the Sixth Form has always been an incredible part of the school community. Our mission now is to ensure that every student who chooses to study with us has every opportunity to achieve their potential. With recent additions to our programmes of study such as our Electives Programme, Football Academy, drop down days for relationship and sex education and opportunities to work closely with other Sixth Forms in the Ted Wragg Trust, we are driving our mission forward faster than ever. We continue to put frameworks in place to ensure that we are living our core values and that the academic progress and holistic development of our students makes them competitive with any other Sixth Form provider in the nation.

Our Values

- **Support as Standard:** We believe in providing unwavering support to every student, ensuring their success and well-being, removing any barriers to learning
- **Bouncing Back, Moving Forward:** We recognise that failure is a crucial part of personal growth and learning, we will guide students in extracting valuable lessons from setbacks to accelerate their progress
- **Exceeding Expectations:** We encourage all students to reach beyond their limits, striving for excellence in study, community, personal growth and destination

Why choose to study with us

- Expert teachers who deliver well sequenced courses and lessons designed to accelerate your progress
- Excellent support from a proactive and caring Sixth Form team and tutors
- A curriculum offer designed to enable the best possible destinations
- A comprehensive personal development programme which educates students on the things that are important to them
- Student voice opportunities which translate into real change
- A thriving and growing extra curricular offer
- The ability to be flexible to give students every chance of success
- Space for you to become you, to study and relax



Personal Development

Here at Exmouth SixthForm, we strive to offer a holistic approach to student progress, not only providing excellence in the academic curriculum; but also in personal development. Within personal development we will develop life skills such as:

- Budgeting, loans, credit cards and student finance; this will be delivered by our College Finance Team
- Relationships and sexual health education
- Citizenship Preparing for independent living
- Democracy
- British Values
- Wellbeing
- Independent study skills

We are also facilitating endeavours in charity and social impact projects, to understand the impact of acts of kindness and being a member of the wider community. We aim to support you to develop a vast range of transferable skills vital in your future careers; communication, teamwork, vision and creativity. All of this will be delivered in the security of tutor groups to get the most from the experience.

Electives

To ensure students have the best experience during their time with us we also offer electives. Electives are on a Wednesday afternoon and students choose an elective to sign up to each term as part of their curriculum. This is an excellent opportunity to enrich CVs and personal statements with relevant courses such as:

- Mental Health Ambassadors - working with local GP surgeries
- British Sign Language
- Cooking on a budget
- Digital tools for study success
- Prom committee
- Extra-curricular to support elite University applications

Others may choose to make the most of our facilities and take part in wellbeing activities such as:

- Crochet
- Colouring
- Board games
- Fitness
- Football
- Pickleball

These extracurricular activities build belonging in our Sixth Form community, and we encourage students to suggest and run an ever-evolving list of elective activities.

Work Experience

At Exmouth Sixth Form, we value work experience and see it as an integral part of the Sixth Form journey, reflecting one of the College's core values: Ambition. Our goal is for every student to complete 50 hours of work experience in Years 12 and 13, gaining valuable insights into the working world that academic studies alone cannot provide. This real-world experience helps students develop essential skills such as communication, teamwork, and time management - skills that are vital for both university study and future employment. Students on a level 2 pathway aim to achieve 150 hours of work experience a year with one day a week dedicated to work placements with support from our expert level 2 tutors.

These experiences are crucial for the personal and professional development of every student during this pivotal stage of their education, empowering them to pursue their ambitions with confidence and purpose.

In the sixth form, students apply for a wide range of work experience, including placements in health, ecological sites and law firms. Ofsted 2024



Sixth Form Entry Requirements

The standard entry for a Sixth Form pathway is 5 grade 4s at GCSE including English Language and Maths. This grants entry to level 3 A level and vocational subjects. Many of our subjects have additional entry requirements which reflect the demands of the individual course, these are on the subject pages in this guide.

The standard entry for the bridging pathway is 5 grade 3s including English Language and Maths. This pathway is a one-year level 2 programme aiming to transition to a level 3 pathway in years 13 and 14.

There is no standard entry for a transition pathway, where learners work at Level 2 for a year in order to get them to their next step, be that further education at a further education college, an apprenticeship or employment. This pathway remains at the discretion of the Sixth Form team.

AQA Extended Project in Year 13

In Year 13, students will be given the opportunity to carry out an AQA Level 3 Extended Project. This qualification is worth valuable UCAS points and will develop and extend an area of study or a topic of personal interest. It will be based on a topic chosen by the student and has proven invaluable for many of our students. Universities love the Extended Project and it has often been used as a 'tiebreaker' between University applicants with similar results, as it requires independent work and original thought.

It is an opportunity to pursue individual interests in ways closer to the University experience. Students love the ability to choose their own topic, independence and high quality individual support - this is reflected in the superb results this subject enjoys.

Student Destinations

We work closely with our students during tutor and throughout their curriculum to ensure they are fully aware of the opportunities available to them after Sixth Form. We ensure they receive the necessary support to achieve their goals, including support from our careers team and our Unifrog next steps platform.

An outstanding number of Sixth Form students move on to higher education and have taken up places at universities such as,

- Bournemouth
- Cardiff
- Durham
- Exeter
- Oxford
- Sheffield
- Southampton
- Swansea
- UWE Bristol
- UCL
- University of Bath

Others have successfully secured employment, secured apprenticeships including degree apprenticeships, decided to take a gap year, or progressed to foundation degrees in further education.

Sixth Form Facilities

Based on our Gipsy Lane site the Sixth Form hub offers plenty of space for study and socialising. Our spaces include:

- Sixth Form Café
- Sixth Form Common Room
- Small group intervention room

We have launched our newly refurbished Sixth Form Study hub which includes:

- Two supervised study rooms
- Two independent study spaces
- A 1-1 intervention space

We host lessons in the fantastic Elizabeth Lee building and the dedicated Telfer teaching space. We use the Elizabeth Lee theatre for assemblies and productions, with sixth form students taking prominent roles in the whole school shows.

Our football academy enjoys use of our Astro, 3G pitch, fitness suite and the grass pitches at Exmouth Town FC.





Sixth Form Football Academy

The Programme

Our Football Academy is designed to provide an opportunity for talented and gifted footballers to focus on their development in a supportive and specialist environment, whilst also gaining academic and vocational qualifications. It is designed as a student athlete programme, where the academic development and contribution by the student is valued over the athletic performance. We aim to develop the students by using a sports-based curriculum to support their transition into adulthood, giving them additional tools to help them navigate this.

Who is the programme designed for?

The programme is for everyone and we are aiming to expand with more students being able to access the academy from year 13 and we hope to have a ladies team in the future, applications dependent. Students will prioritise their academic study where there are any clashes.

What's on offer?

- 32 weeks of Academy coaching by a UEFA qualified coach
- A tailored football curriculum offering a minimum of 10 hours a week of coaching and classroom sessions to run alongside a minimum of 3 A levels or equivalent
- VEO analysis sessions
- Insights into sports nutrition and diet planning
- Insights into sports psychology and tools on how to use
- Sports therapist and sports therapy built into sessions
- Strength and conditioning sessions
- Player reviews – minimum of 3 per season
- Academy kit and training kits
- AOC League and Cup entry
- Links with Exmouth Town FC



What our students say....

“ BTEC Sport is really amazing, it helps you develop confidence and really come out of your shell. I have made friends from the year above and my year which helps with all the questions I have about the course and my next steps. - Isla ”

“ The free time is really useful and you don't feel as much pressure as you might in year 11, you are seen as an individual in the Sixth Form - Wanessa ”

“ The small friendly classes really help my learning as I'm not afraid to ask for extra support if I need it, and I love being able to go home during my frees. The wellbeing team is extremely supportive. - Lyra ”



CONTENTS

Art and Technology

Art Craft and Design
Graphics
Photography
3D Design

Business, Computing and Media

Business Studies
Computer Science
Media Studies
Media (Level 2)

English

English Language
English Literature

Expressive Arts

Dance
Performing Arts (Drama)
Performing Arts (Level 2)

Geography

Geography

Health and Social Sciences

Criminology
Sociology
Politics
Psychology
Early Childhood Development
AAQ Health & Social Care
BTEC Diploma Health & Social Care
Early Years Practitioner (Level 2)

History

History

Mathematics

Core Mathematics
Further Mathematics
Mathematics

CONTENTS

Modern Foreign Languages

Classical Civilisation
French
Spanish

Physical Education

PE
Sport
Sport (Level 2)

Religion, Philosophy and Ethics

Philosophy

Science

Biology
Chemistry
Physics

Art, Craft & Design

What you will study?

A range of traditional and modern recording processes. Contextual studies and the work of influential artists both contemporary and historical. Develop your use of visual language through fine art and craft techniques. Use a range of media, techniques and processes to explore a self-selected brief.

How you will be assessed?

Component 1: Personal Investigation

- Portfolio of work: Personal study of a minimum of 1000 words.
- Coursework 60% of total A-level assessment

Component 2: Externally Set Assignment

- Portfolio of work: Preparatory time plus a 15-hour timed examination.
- 40% of total A-level assessment

Why should you study art?

The A Level Art course provides a route to further education, with students progressing to foundation, direct to BA degrees or apprenticeships. This could lead you to work, either freelance or employed, in a wide range of areas, such as: fine art, craft, media, advertising, design, architecture, fashion, and many more.

Additional entry requirements Standard entry + Grade 4 in Art GCSE/3D Design/Textiles/Graphics or Design/Textiles/Graphics.

Mr Perry says: A Level Art and Design is a lively creative course suitable for students who thrive in a busy, productive environment. The department operates an "open door" policy so that students can work outside of timetabled hours, and staff are frequently on hand to help students with their artwork or give guidance and advice. A huge number of our art students continue with their studies in further and higher education, utilising the broad range of skills they develop in this nurturing environment.



Graphic Communication

What you will study?

This is a two-year art based qualification that will introduce you to Graphic Communication techniques as well as a full range of art skills. This is a highly creative course where you will develop skills in exploring, creating and making. You will produce a selection of high quality products using Graphic techniques and learn how to communicate your ideas. These skills include – Hand rendered working methods, digital photography, print making, and use of the creative cloud programs such as Photoshop and Illustrator. Over the two years you will produce a range of outcomes such as packaging, illustrations for books, magazine layouts and branding. You will record it in a portfolio of work supported by drawings, using photos, screen shots and photography which you will submit as your coursework.

How you will be assessed?

Exam board – AQA

Assessment: 60% coursework 40% exam

Why should you study graphic communication?

There are many University courses that utilise the skills and processes learnt on this course, including Gaming Design, Media, Digital Print, Graphic Design, Interior Design to mention a few.

Entry requirements: Standard entry + a grade 4 in Art GCSE/3D Design/Textiles/Graphics.

Mrs Browne says: Graphic Communication is an exciting and inspiring course that helps you grow as a designer and discover your unique creative voice. It encourages you to experiment, think critically, and express ideas visually in new and imaginative ways. My passion for design drives me to inspire others to strengthen their skills, broaden their creative thinking, and see the world through a designer's eye.



Photography

What you will study?

- A range of traditional and digital processes; including a range of cameras, darkroom, Photoshop and studio work.
- Contextual studies and the work of influential photographers both contemporary and historical.
- Develop your use of visual language through photographic techniques.
- Use a range of photographic media, techniques and processes to explore a self-selected brief.

How you will be assessed?

Exam board – Edexcel

Component 1: Personal Investigation

Portfolio of work Personal study of a minimum of 1000 words

Coursework 60% of total A-level assessment

Component 2: Externally Set Assignment Portfolio of work Preparatory time plus a 15-hour timed examination 40% of total A-level assessment

Why should you study photography?

The A Level Photography course provides a route to further education, with students progressing to foundation, direct to BA degrees or apprenticeships. This could lead you to work, either freelance or employed, in a wide range of areas, such as: art, media, advertising, design, architecture, police and crime investigation, wedding and event documentary, fashion, large organisations such as leisure companies, hospitals or universities, and many more.

Additional entry requirements: Standard entry

Mr Perry says: The A Level Photography course is a hugely popular program which enables learners to engage with a subject which they have not studied up to this point. This course is suitable for all students with a keen interest in the visual arts who thrive in a busy, creative environment. The course is designed to give students understanding of a wide range of photographic techniques and processes, from traditional chemical processes to digital photography and image manipulation.



3D Design

What you will study?

Contextual studies and the work of influential artists and designers both contemporary and historical. Develop your use of visual language through art and design techniques. Use a range of media, techniques and processes to explore self-selected briefs and themes.

How you will be assessed?

Component 1: Personal Investigation

- Portfolio of work
- Personal study of 1000-3000 words
- Coursework 60% of total A-level assessment

Component 2: Externally Set Assignment (February Yr13)

- Portfolio of work Preparatory time plus a 15-hour timed examination 40% of total A-level assessment

Why should you study?

If you enjoy Art & Design and Design Technology and you wish to be a part of the unique atmosphere of the Design Technology Department at Sixth Form, then A Level Art & Design: 3D is for you.

3D allows you to express yourself creatively and to produce work based on your own strengths and interests. Throughout the course you will work from different themes, experiment with a wide range of media, techniques and research the work of artists, thus identifying and developing your own style of working. 3D allows you experience a wide range of media including card, metal, wood, polymers, wire, CAD/CAM and produce a variety of final outcomes from furniture, jewellery, lighting, architecture models to product design. You can specialise in one or more areas with a team of dedicated and experienced teachers and technicians who will support you on your creative journey.

Additional entry requirements: Standard + 4 in Art GCSE/3D Design/Textiles/ Graphics

Mrs Browne says: Art and Design 3D allows students to develop their creativity through a variety of mediums, from sculptural pieces to architectural models, jewellery and furniture. Having worked at ECC since 2018 it has been a real highlight to see the P16 students journeys from KS3 to KS5, watching their confidence grow and developing a personal response to design briefs. There is nothing more rewarding than seeing students having passion for your subject and continuing on to creative design jobs and degrees.



Business Studies

What you will study?

The Pearson Edexcel Level 3 Advanced GCE in Business, is structured into four themes and consists of three externally examined papers. Students are introduced to Business in Themes 1 and 2, through building knowledge of core business concepts and applying them to business contexts, to develop a broad understanding of how businesses work. Breadth and depth of knowledge and understanding, with applications to a wider range of contexts and more complex business information, are developed in Themes 3 and 4 which requires students to take a more strategic view of business opportunities and issues. Students are encouraged to use an enquiring, critical and thoughtful approach to the study of business, to understand that business behaviour can be studied from a range of perspectives and to challenge assumptions.

Themes 1 and 2 are covered in Year 12 with themes 3 and 4 covered in Year 13.

Theme 1: Marketing and people	Theme 2: Managing business activities
<p>Students will develop an understanding of:</p> <ul style="list-style-type: none"> • meeting customer needs • the market • marketing mix and strategy • entrepreneurs 	<p>Students will develop an understanding of:</p> <ul style="list-style-type: none"> • raising finance • financial planning • managing finance • resource management • external influences
Theme 3: Business decisions and strategy	Theme 4: Global business
<p>This theme develops the concepts introduced in Theme 2. Students will develop an understanding of:</p> <ul style="list-style-type: none"> • business objectives and strategy • business growth • decision-making techniques • influences on business decision • assessing competitiveness • managing change 	<p>This theme develops the concepts introduced in Theme 1. Students will develop an understanding of:</p> <ul style="list-style-type: none"> • globalisation • global markets and business expansion • global industries and companies (multinational corporations).

How you will be assessed?

Exam Board: Edexcel/Pearson For A Level Business, a 100% terminal rule applies. Students will follow this linear course where they will be externally examined in the summer of Year 13. There are three papers, each lasting two hours.

Why should you study business?

A Level Business is accepted (with other subjects) as an appropriate qualification for entry to almost any career or degree course.

Additional entry requirements: Standard entry

For more information please see: Mr Simon – Business Studies Co-ordinator

Computer Science

What you will study?

This exciting course has been designed for students who wish to go on to higher education courses or employment where knowledge of computer science would be beneficial. The emphasis is on computational and abstract thinking, general problem solving, algorithmic reasoning; Design, program and evaluate computer system that solve problems, make reasoned judgements about these and presenting conclusion; and understanding of the principles and concepts of computer science including analysing problems in computational, scientific and engineering based thinking, which lays a good foundation for understanding ever increasing future challenges that face computer scientists.

How you will be assessed? Exam board - OCR

Component 01: Computer systems (40% of the marks)

- The characteristics of contemporary processors, input, output and storage devices
- Types of software and the different methodologies used to develop software
- Data exchange between different systems
- Data types, data structures and algorithms
- Legal, moral, cultural and ethical issues.



Component 02: Algorithms and programming (40% of the marks)

This builds on component 01 to include computational thinking and problem-solving and covers:

- What is meant by computational thinking (thinking abstractly, thinking ahead, thinking procedurally etc.)
- Problem solving and programming – how computers and programs can be used to solve problems
- Algorithms and how they can be used to describe and solve problems.

Component 3: Programming project (20% of the marks)

- This component gives the students the opportunity to independently choose a problem to solve and go through the full development process to create a solution in a suitable programming language. Students are expected to apply the principles of computational thinking and analyse, design, develop, test, evaluate and document the resulting program.

Why should you study computer science?

In an increasingly digital world a growing majority of organisations and businesses rely more and more on staff with computing skills. It is not surprising therefore that computer science can open doors in a way that that many other subjects do not. Studying computer science can lead towards specialism at University and, increasingly, apprentice placement in a whole range of areas such as science, maths, engineering, education and business.

Additional entry requirements: Standard entry + a grade 6 in GCSE Maths or 6 in GCSE Physics or 66 in double Science.

For more information please see:

Mr Quinn – Faculty Leader of Business, Computing and Media

Media Studies

What you will study?

Media Studies allows us to examine how media texts are both produced and consumed. It allows us to explore how technology is changing our relationship with the media and ever increasingly putting us, the audience, in the position of producer. In Media Studies A Level you will analyse a range of set texts looking at how they create meaning and the messages they are giving us, the audience. You will become an analytical, academic critic of the media.

How you will be assessed? Exam board – Eduqas

The Eduqas A Level course provides you with the opportunity to not only study a range of media texts and to apply theoretical frameworks, but also to develop practical production skills in the form of a coursework element (30%).

Component 1 (35%) – 2hr 15 minute exam. A range of different set texts to be studied from a variety of Media platforms including video games, film marketing, newspapers, magazines, radio and social media. All set texts are studied looking at Language, Representation, Industry and Audience.

Component 2 (35%) – 2hr 30 minute exam. In component 2 you will study TV, magazine and online media in depth. You study a range of theorists and apply understanding of all aspects of the Media Studies framework.

Component 3 (30%) – Non Exam Assessment (coursework). Coursework is based on a brief set by the exam board. There is a choice of five different topics including: Music Videos, Film Marketing, Magazine and TV. You will research, plan and create your own Media product.

Why should you study media?

The media plays a significant role in contemporary culture, society and politics, as well as having a crucial role in shaping our own life experiences. Everyone should have a knowledge of the media, its audience and the interwoven ideologies they share. Studying Media at A Level will help you become an analytical, evaluative and questioning student.

Additional entry requirements: Standard entry

For more information please see:

Mrs Thomas – Media Teacher

Mr Quinn – Faculty Leader of Business, Computing and Media

Mrs Thomas says: If you love stories, films, and making stuff, A Level Media is a brilliant place to experiment. You'll pick up hands-on skills in video, audio, and digital production that you can actually show off. We dig into how media shapes ideas and audiences, and you'll learn to read it like a pro. Projects teach real-world collaboration and build work you can put in a portfolio. This course is a great step toward film, TV, journalism, marketing, or creative freelancing.

Media Level 2

What you will study?

Units include:

- Photography for media products
- Print-based advertising media
- Video production
- Print media production
- Audio for moving image products
- Introduction to media

How you will be assessed?

Exam board – Cambridge Technical Over six internally assessed units, students produce detailed portfolios which see media products produced from just an idea through to post-production.

Why should you study media level 2?

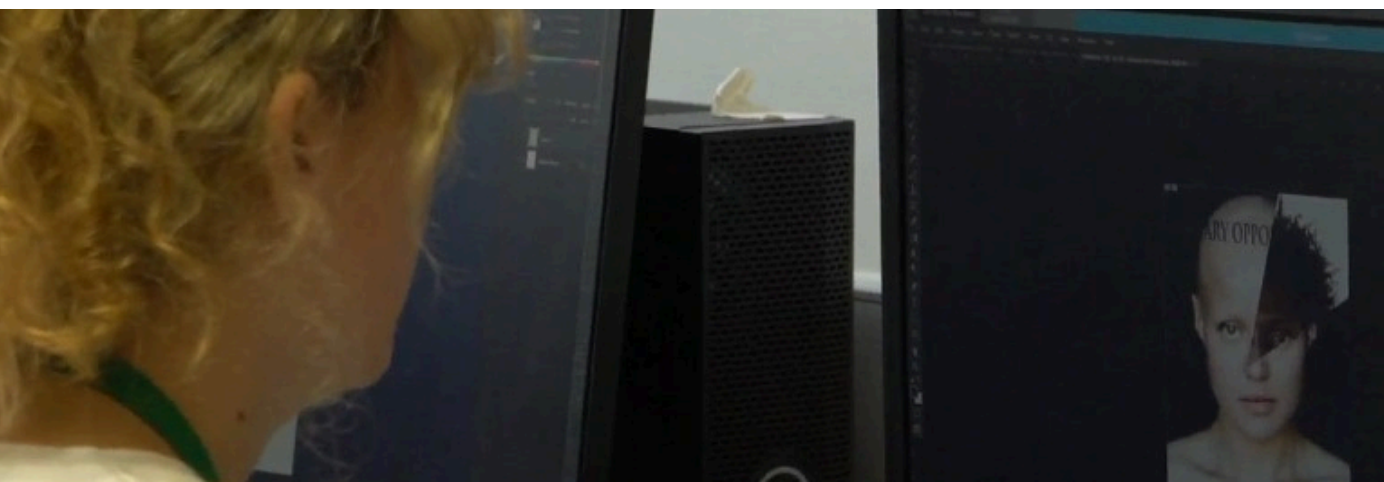
This course allows students to gain experience in a number of media disciplines. Students will produce convincing media products and follow "real world" production processes as well as having access to industry standard software and equipment.

Entry requirements: 5 GCSEs at grade 3 including English and Maths. Other grades may be considered at the discretion of the Sixth Form Team.

For more information please see:

Mrs Hannah Thomas – Media Teacher

Mr Jake Quinn – Faculty Leader of Business, Computing and Media



English Language

What you will study?

Component 1: Spoken Language and Language Issues.

Component 2: Language Change and 21st Century Language

Component 3: Creative and Critical Writing

Component 4: Language Investigation Coursework on Identity

How you will be assessed?

Exam board – Eduqas

Three exams

NEA 20% of qualification

Why should you study English language?

English Language A-Level offers you the unique opportunity to study how language is shaping and changing our lives. Would you like to study how Donald Trump uses language to achieve status and power, or how Russell Brand switches from talking like a cockney 'barrow boy' to a highbrow intellectual? Then a course of language study is for you. You will have the opportunity to study a unit on 21st century language, studying a range of texts including social media, You Tube blogs, newspaper and magazine journalism and web pages. You will also explore how language has changed over time, from Early Modern English onwards and learn about the conventions of spoken language.

Creative writing is also examined, allowing you to showcase your skills by writing in a variety of fiction and non-fiction forms including, travel writing, biography and magazine articles.

The A Level is highly regarded by universities and will open up many career pathways for you, such as journalism, speech and language therapy, education, media and marketing.

Additional entry requirements: Standard entry + at least Grade 5 in GCSE English Language.

For more information please see:

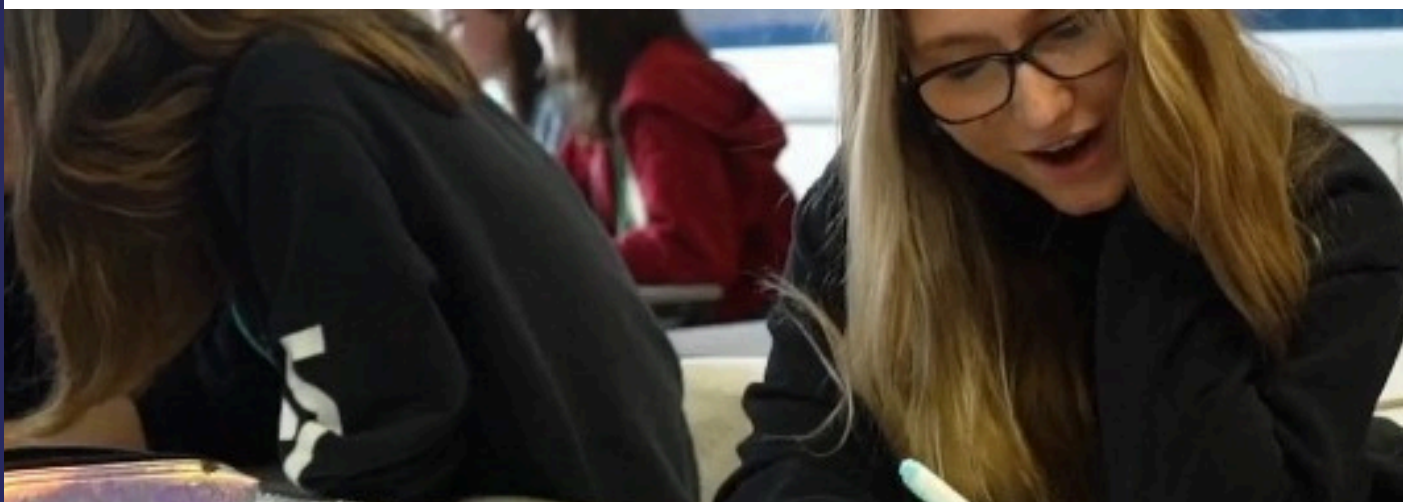
Mrs Lea Carpenter – Faculty Leader of English

Mrs Helen Millman Jones – KS5 English co-ordinator

“Language is a parade, and nobody sits at a parade wishing that everybody would stand still.”

John McWhorter

American academic and linguist



English Literature

What you will study:

Paper 1: Love Through the Ages – AQA poetry anthology, 'The Great Gatsby' by F.Scott Fitzgerald, 'Othello' by William Shakespeare and unseen poetry.

Paper 2: Modern Times – 'The Handmaid's Tale' by Margaret Atwood, 'Feminine Gospels' by Carol Ann Duffy, 'A Streetcar Named Desire' by Tennessee Williams and unseen prose.

NEA (Coursework): Texts across Time - 2,500 word essay comparing 'Far From the Madding Crowd' by Thomas Hardy with a text studied independently.

How you will be assessed:

Exam board – AQA

Two exams – all open book (clean copies) except for the Shakespeare essay question.

One NEA - 20% of the course

Why you should study English literature: English Literature A Level has long been regarded as a qualification that produces rounded, analytical thinkers, who can write with fluency and creativity. It is a subject which encourages you to think for yourself and expand your knowledge. You will study a variety of novels, plays and poetry from different time periods. The NEA (coursework) component will allow you to follow your interests in selecting your comparative text. Studying literature at A Level is about independent thinking, discussion, interpretation and creativity.

This A Level is highly regarded by universities and will open up many career pathways for you such as law, education and publishing.

Every year, we offer students a range of opportunities to visit the theatre, attend study days or author visits.

Additional entry requirements: Standard entry + Grade 5 in GCSE English Literature.

For more information please see:

Mrs Lea Carpenter – Faculty Leader of English

Mrs Helen Millman Jones – KS5 English co-ordinator



Dance

What you will study?

A level dance is uniquely offered at Exmouth Sixth Form and provides an advanced level of training in performance, technique and choreography. In addition, students study dance history, critical analysis of dance works and a variety of influential choreographers. Each week, students take part in technique classes that build physicality and expand their repertoire in a range of styles. Choreographic workshops, theatre trips and visits from professional companies enable students to explore their own ideas to create well structured, engaging and intelligent dance pieces. Whilst the theory is embedded into all practical elements, students are also guided in how to write critically about dance for the written exam.

How you will be assessed? Exam board specification- AQA (7237)

Component 1: Performance and choreography

- Solo performance in the style of a professional choreographer
- Performance in a quartet
- Group choreography in response to a chosen stimulus

How it's assessed

Practical exam

80 marks

50% of A-level

Component 2: Critical engagement. (Knowledge, understanding and critical appreciation)

- Rooster (1994) by Rambert Dance Company The history of
- Rambert Dance Company between 1966 - 2002 Sutra (2009)
- by Sidi Larbi Cherkaoui The independent contemporary dance scene in Britain 2000 – present day

How it's assessed

Written exam: 2 hours 30 minutes 100 marks 50% of A-level

Why Study A Level Dance?

Access to university or conservatoire dance training, University degree courses in a wide range of specialist areas, Foundation degree courses in the arts. Many of our A Level dance students have used their fantastic transferable skills to go on to study and work in a wide range of industries.

Additional entry requirements: Standard entry + 5 in GCSE Dance

Mrs Phillips says: A level Dance students are amazing. Not only do they become wonderful dancers, creative choreographers and critical thinkers about the arts and the world around us, they also understand what it takes to collaborate with others and successfully produce their own work. Many of our alumni have gone on to train professionally as dancers, as well as using their A level qualification to study and work in a wide range of other professions.



Creative and Performing Arts Level 2

What you will study?

The Level 2 Diploma in Creative and Performing Arts equips learners with the skills, knowledge and understanding for entry to employment in the creative and performing arts industry. It can also lead to progression to further study at a higher level. The qualification aims to offer practical structured learning with the flexibility to specialise in different disciplines such as dance, acting and music.

You will have lessons and assessments in all disciplines, which will be tailored to your strengths and build confidence and ability in your skills across all to make you a real 'triple threat!'

You will study 5 units over 1 year. The 2 core units are:

- Planning for a career in the arts
- Final performance with a public performance

Entry requirements

The standard entry for a Sixth Form pathway for Level 2 including A-Levels and Vocational subjects. It is 5 grade 3's at GCSE including English Language and Maths.

For more information please see:

Mrs Amy Phillips - Head of Expressive Arts & Head of Dance

Mrs Lauren Coull - Head of Drama



Drama: Performing Arts

What you will study? We will explore all three aspects of Drama and Performing Arts – performing, creating and responding. The content of this course is selected by our specialist teaching staff, in collaboration with you (the students in the cohort). This means we can offer a tailored course to meet your needs and interest.

Performing - You will develop the appropriate skills and techniques in Drama and Physical Theatre. You will participate in regular workshops, classes and exercises where you will acquire, practice and develop the necessary technical, practical and interpretative performance skills to help you succeed when performing live to an audience. You will consider the nature, skills and attributes of the performer's role. You will work with existing performance works, analysing and interpreting the material in order to understand and apply the relevant skills and techniques appropriate to the style. In practical classes you will demonstrate the discipline, focus and commitment the role of the performer requires. Ongoing review and evaluation will allow you to monitor your progress and set targets for the development of your performance skills.

Responding – You will investigate the work of performing arts practitioners and develop critical analysis skills and contextual understanding of how practitioners communicate themes in their work.

Creating - You will learn how to respond to a given stimulus as part of a group, using research, discussion and practical exploration to develop performance material and later present the work to an invited audience. As a member of a team, you will contribute to the creative development and rehearsal process, shaping and refining the work and applying performance and teamwork skills. You will share responsibility for creative decisions regarding the nature and direction of the intended performance. The performance will be an opportunity to try out the work before an audience to invite discussion and evaluation of its potential. You will reflect on the development process, considering the success and potential of the work for further development, as well as evaluating your own contribution to the process and the product.

How you will be assessed?

The qualification is comprised of 4 units – 2 internally assessed and externally moderated, and 2 externally assessed. 2 of the 4 units allows for you to respond to the task in different ways, for example written report, blog, scrapbook, video evidence. 2 units will be completed in Year 12 and 2 will be completed in Year 13.

Why should you study Drama?

It will increase your self-esteem and confidence. You will learn the skills of listening, negotiating and communicating. It will expand your cultural awareness, exploring theatre work from a range of practitioners and styles. It will increase your ability to think; creatively, imaginatively and divergently. You will learn how to think outside the box and solve problems. Drama requires us to view things from multiple perspectives, which automatically widens our perspectives.

You will learn how to be creative and express your creativity in a variety of ways. In drama there is no right or wrong, creative play is encouraged and mistakes are often happy accidents. You will also develop wider transferable skills, such as being able to work collaboratively, personal management and organisation (rehearsals, time-management), being able to give and take direction, confidence in front of an audience, problem solving (refining the process) and teamwork (essential when performing as a group).

Entry requirements The standard entry for a Sixth Form pathway, Level 3 including A Levels and Vocational subjects, is 5 grade 4s at GCSE including English Language and Maths.

For more information please see: Mrs Laureb Coull - Head of Drama
Mrs Amy Phillips - Faculty Leader of Expressive Arts

Geography

What you will study?

A Level Geography builds on the knowledge gained at GCSE, deepening your understanding of familiar topics while introducing exciting new areas from the diverse and dynamic world of Geography. The course takes an issues-based approach, encouraging you to explore and evaluate contemporary geographical challenges such as:

- The consequences of globalisation
- Human rights and inequality
- Natural hazards and how we respond to them
- Water insecurity
- Climate change and sustainability

These are real-world issues that are constantly evolving and highly relevant to our lives today.

How you will be assessed?

Exam board – Edexcel Assessment is through three written exams at the end of the two-year course:

- *Paper 1* (2 hours 15 minutes): Focuses on physical geography topics
- *Paper 2* (2 hours 15 minutes): Covers human geography themes
- *Paper 3* (2 hours 15 minutes): A synoptic paper that explores a key issue (e.g., deforestation in tropical rainforests) using a range of resources and the knowledge and skills developed throughout the course.

In addition to the exams, you will complete an Independent Investigation (NEA), a coursework component worth 20% of your final grade. This is your opportunity to conduct a geographical enquiry on a topic of your choice.

Fieldwork Opportunities Geography wouldn't be complete without fieldwork. We offer more fieldwork than most schools because we know how valuable it is for deepening understanding and building skills. You'll take part in:

- Local fieldwork activities
- Two residential trips: one to Birmingham and another to Cornwall during the summer term

These experiences not only enrich your learning but also support your Independent Investigation.

Why should you study geography?

Geography is one of the most popular and successful subjects in our Sixth Form. It offers a unique blend of academic challenge and real-world relevance, helping students develop a deep understanding of the world around them. Many of our students go on to study Geography or related disciplines at university, including environmental science, urban planning, international development, and geopolitics. Studying Geography equips you with valuable skills such as critical thinking, data analysis, research, and communication—skills that are highly regarded by universities and employers alike.

Additional entry requirements: Standard entry + a minimum grade 5 in Geography.

Mrs Outram says: Geography helps students make sense of a complex and ever-changing world. It encourages curiosity, builds resilience, and opens doors to a wide range of future opportunities.



Criminology

What you will study?

- Introduction to Criminological Theories
- Changing Awareness of Crime
- Crime Scene to Courtroom
- Crime and Punishment

Students must complete ALL units

Criminology is a subject which looks at issues such as:

- Analysing criminal behaviour
- Theories of why people commit crime
- How does a courtroom work?
- Cyber crime
- Hate crimes,
- Honour crimes
- How the media influences which crimes we report.

How you will be assessed?

Exam board – WJEC Entry Level Framework Specifications

This is an applied general qualification. This means it has two internal assessment points and two external exams over two years.

Why should you study criminology?

This Level 3 qualification will appeal to students who are interested in criminal justice and may be considering careers in areas such as the Police, the legal system, teaching, social work, the Prison service and the Probation service.

Criminology contains elements of Psychology, Law and Sociology; which will complement subjects such as History and English.

Additional entry requirements: Standard entry For more information please see: Pippa Gale – Faculty Leader of Health and Social Sciences or Mrs Nicky Knight – Health and Social Sciences Co-Ordinator

Sociology

What you will study? Sociology is the only subject which explores contemporary society. By studying Sociology, you gain crucial skills in problem solving and analysis. You will use evidence to formulate solutions for contemporary social problems such as poverty, crime and educational underachievement. The 21st century has proven to be a period of rapid social change, which Sociologists attempt to explain. The key transferable skills that Sociology provides prepares students for a diverse range of careers including careers in public services such as the Police; community and youth work; human resources; education; marketing; business; counselling; politics and the charity sector.

How you will be assessed?

Exam board – AQA (7192)

Paper 1 – Education with Theory and Methods

- Written exam - 2 hours
- 80 marks in total
- 33.3% of total A-level assessment

Paper 3 – Crime and Deviance with Theory and Methods

- Written exam - 2 hours
- 80 marks in total
- 33.3% of total A-level assessment

Paper 2 – Topics in Sociology

- Written exam - 2 hours
- 80 marks in total
- 33.3% of total A-level assessment

Why should you study sociology?

Sociology A level is recommended for careers such as Nursing, Teaching, Social Work and Police Work, but it also involves current affairs, political opinions and an element of philosophical speculation about human nature – it is one of the broadest A levels you can do, and it goes well with almost any subject combination.

Additional entry requirements:

Standard entry + a grade 5 GCSE English.

Politics

What you will study?

Component 1: UK Politics 33% of final grade

- Political Participation: Democracy and participation, political parties, electoral systems, voting behaviour and the media.

Core Political Ideas: Conservatism, liberalism, socialism.

Component 2: UK Government 33% of final grade

- UK Government: The constitution, parliament, Prime Minister and executive, relationships between the branches.
- Non-core political ideas: One idea from the following: anarchism, ecologism, feminism, multiculturalism, nationalism.

Component 3: Comparative Politics 33% of final grade

- USA (3A): The US Constitution and federalism, US Congress, US presidency, US Supreme Court and civil rights, democracy and participation, comparative theories.
- Or Global (3B): Sovereignty and globalisation, global governance: political and economic, global governance: human rights and environmental, power and developments, regionalism and the European Union, comparative theories.

How you will be assessed?

Exam board: Edexcel

All written exams, 2 hours long and 84 marks each.

Why should you study politics? This course enables you to develop knowledge and an informed understanding of contemporary political structures and issues in their historical context, both within the United Kingdom (UK) and globally, develop a critical awareness of the changing nature of politics and the relationships between political ideas, institutions and processes and develop the skills to critically analyse, interpret and evaluate political information to form arguments.

Entry requirements: Standard entry

Miss Gale says: Politics A Level will empower you to better understand, and critically examine, our political systems in the UK and beyond.

“Never doubt that a small group of thoughtful citizens can change the world. Indeed, it is the only thing that ever has.”

— **Margaret Mead**



Psychology

What you will study?

- Social influence
- Memory
- Attachment
- Psychopathology
- Approaches in Psychology
- Biopsychology
- Research methods
- Issues and debates in Psychology
- Schizophrenia
- Forensic psychology
- Relationships

How you will be assessed?

Exam board – AQA (7182)

Paper 1: Introductory Topics in Psychology

- Written exam - 2 hours
- 96 marks in total
- 33.3% of total A-level assessment

Paper 2: Psychology in Context

- Written exam - 2 hours
- 96 marks in total
- 33.3% of total A-level assessment

Why should you study psychology?

In Psychology we study a range of subjects such as memory, psychopathology, schizophrenia and attachment. Students who study this subject will gain a knowledge of the world and look differently at mental illness and abnormality. They will gain a knowledge of developmental psychology and topics such as forensic psychology where all aspects will be explored. Discussion is necessary at Exmouth and students will work in small groups often to look at subjects from different angles and maybe present their findings to the rest of the class. Psychology graduates have one of the highest employment rates of any subject! You can use it for social work, the police, education, advertising, counselling, mental health nursing, and many more....

Additional entry requirements: Standard entry + 5 in GCSE maths and English

For more information please see:

Miss Gale – Faculty Leader of Health and Social Sciences

Mrs Knight – Health and Social Sciences Co-ordinator



BTEC Level 3 Extended Certificate in Health & Social Care

What you will study?

- A broad range of investigation of the children's care and education sector from birth to 8 years
- Theories, principles and factors relating to children's development, and the impact of a range of factors on a child's progress through developmental milestones
- Health, safety and safeguarding responsibilities, emergency best practices, and when and how to address concerns about a child's welfare
- The concept of play, the influence of theories and approaches to play, and the benefits of play for children
- The influence of research findings on policy and provision for children and how this influences the behaviours and expectations of an individual working in an early year's setting
- You will also complete a minimum of 50 hours of work experience in an early year's setting

How you will be assessed?

Exam board – Edexcel

You will be assessed through two externally set exams and two course work units.

This two year course is equivalent to one A level and will be taken alongside other qualifications.

Unit	Unit Title	Form of assessment	Year
1	Children's Development	Exam	12
3	Play and Learning	Coursework	12
2	Keeping Children Safe	Exam	13
4	Research and Reflective Practice in an Early Childhood Setting	Coursework	13

Why should you study health and social care?

Working with children clearly needs to be an interest of yours if you are considering this course. You will study children from birth to 7 years and 11 months. As part of the course, you will complete a minimum of 50 hours mandatory work experience.

Additional entry requirements: Standard entry + you will need a clear DBS.

Mrs Fawkes says: The team is incredibly proud to teach Level 3 Health and Social Care. It's a brilliant course that students really enjoy, with so much variety and relevance. It opens up amazing career pathways in healthcare and social care, giving students the confidence, skills, and knowledge to succeed in the future.



BTEC Level 3 National Extended Certificate in Early Childhood Development

What you will study?

- Human Lifespan and Development – you will evaluate how factors, health inequalities and prevalent health conditions interrelate to affect PIES development across the human lifespan; and how the roles and responsibilities of those working in health and social care meet the needs of individuals.
- Human Biology and Health – human body structure and systems, normal physiological functioning and the impact of common disorders. You will demonstrate application of knowledge and understanding of the structure and function of body systems to the primary and secondary effects of common disorders on those body systems
- Health and Social Care Practice – Core principles, values and legislation that underpin and influence health and social care, and the effect of social determinants on an individual health status. You will examine how organisation, legislation and guidance inform practice in health and social care
- Promoting Health Education – Health education, its purpose and use of different approaches and models to achieve positive health outcomes. You will examine approaches to health education campaigns and their impact on health and wellbeing.

How you will be assessed?

Exam board – Edexcel

This course is a two-year course equivalent to one A-Level.

50% examination based and 50% coursework based.

Unit	Unit Title	Form of assessment	Year
1	Human Lifespan and Development	Exam	12
2	Human Biology and Health	Exam	12
3	Principles of Health and Social Care Practice	Coursework	13
5	Promoting Health Education	Coursework	13

Why should you study early childhood development?

This is a two-year programme that is equivalent to one A level. If you see yourself working with children or adults in a helping capacity, then this course is for you. Possible careers that can lead on from this qualification are social work, teaching, midwifery, paramedic, radiography, theatre nurse/ODP worker, occupational therapy, nursing and many more.

Additional entry requirements: Standard entry

Mrs Fawkes says: This is a fantastic course for anyone considering teaching in the early years sector. It covers many foundational theories that support children's learning, and students learn how to apply these effectively in early years settings. It's incredibly rewarding, and students love the hands-on learning. This qualification opens exciting career pathways in childcare and education.

BTEC Level 3 National Diploma in Health & Social Care

What you will study?

In Year 12 you will cover the content outlined in the Extended Certificate in Health and Social Care (please see the Extended Certificate information above)

In Year 13 you will:

- Complete 100 hours of work experience in a Health and Social Care setting.
- You will have support from your teacher to set up your placement. There are opportunities to work in the Royal Devon and Exeter Hospital.
- Engage in current research and investigate a current health and social care issue using a literature research methodology.
- Explore the principles of safe working practice in health and social care and the policies and procedures in place to protect individuals from harm.
- Evaluate the success of public health campaigns and approaches used to promote and protect health and prevent disease.

How you will be assessed?

Exam board – Pearson

This course is a two-year course equivalent to two A-Levels 50% examination based and 50% coursework based.

Why should you study health and social care?

This is a two-year programme that is equivalent two A Levels. If you see yourself working with children or adults in a helping capacity, then this course is for you. Possible careers that can lead on from this qualification are social work, teaching, midwifery, paramedic, radiography, theatre nurse/ODP worker, occupational therapy, nursing and many more.

Additional entry requirements: Standard entry

For more information please see:

Miss Pippa Gale – Faculty Leader of Health and Social Sciences



Level 2 NCFE CACHE Level 2 Diploma for the Early Years Practitioner

What you will study?

- Complete a minimum of 250 hours working in an authorised early year's setting and learn about different job roles, responsibilities and career pathways in the early years sector.
- Learn about five different areas of development – physical, cognitive, language, emotional and social – and how they are linked.
- Explore how early years settings use play to promote children's learning and development at different ages and stages. Learn about the general principles that underpin work in early years settings and ways in which adults in settings work with children and their families.
- Explore different factors that affect children's behaviour and the role of adults in early years settings in encouraging children to develop positive behaviour.
- Develop your understanding of how to keep children safe in early years settings by reducing the risk of accidents and infections.

How you will be assessed?

Exam board – NCFE CACHE

The course is 100% coursework based across 14 units.

This one-year course is equivalent to two GCSE's

Why should you study?

Are you interested in a career working with children? Do you want the opportunity to broaden your knowledge and understanding of the early years sector and develop your skills working in the early years sector? On completion of this course you may choose to enter employment or progress to a Level 3 course here at Exmouth Community College.

Entry requirements: 5 GCSEs at grade 3 including English and Maths. Other grades may be considered at the discretion of the Sixth Form Team.

For more information please see:

Miss Pippa Gale – Faculty Leader of Health and Social Sciences



History

What you will study?

The Later Tudors

Investigate the scandal, war and politics of the Mid Tudor and Elizabethan period - Was Mary really 'Bloody'? Was Elizabeth's reign really a 'Golden Age'?

Russia and its Rulers, 1855-1964

Consider how and why Russia has changed...or whether it has really changed at all! Scrutinise the way that leaders treated their people - Stalin's 'purges' and what they achieved.

The Cold War in Asia

Not for the faint hearted! Look at the horrors of the Cold War in China, Cambodia, Korea and Vietnam. The Killing Fields and US policy towards Asia.

The Vietnam War

As part of your coursework, you will build on your knowledge from the examined cold war topic to scrutinise America's involvement in Vietnam: Why did they get involved? and more importantly, why did they lose?!

How you will be assessed?

Through the exam board (OCR), students will complete three Units in the summer term of Year 13 as a final exam. This includes the units on: *Cold War In Asia, Later Tudors & Russia & Its Rulers*. In Year 12 students will be assessed on their coursework on the Vietnam War and this will be completed and moderated at the start of the summer term of year 12.

In class assessments will be made to ensure students know their areas of strength and areas for improvement.

Why should you study history?

History is a 'facilitating' subject, meaning that it leads ANYWHERE YOU WANT TO GO! The skills acquired by studying the subject at Sixth Form: Source analysis, research, developed writing - are suitable to many careers, as well as being required for most further study courses, making History a preferred A level by many Universities. It can lead to careers in law, architecture, administration, politics, business, economics, as well as teaching and literacy based professions.

Additional entry requirements: Standard entry + grade 5 in GCSE History.

Mrs Hamblin says: This is a fantastic subject that will allow you to explore the past and develop your understanding of how as humanity we have reached the point we are now. How important individuals make big decisions that consequently have an impact on the world today. How everyday people's attitudes cause a ripple and effect that leave a legacy today. As a course you will go away having developed skills of debate, working with sources, examining the interpretations of Historians. Careers from Journalists, Civil Service, Curators & working in politics have all been undertaken by our previous students! See the benefits of taking History at ECC.



Core Mathematics

What you will study?

Core Mathematics is about students doing meaningful mathematical problems to increase their confidence in using mathematics to be better equipped for the mathematical demands of other courses, higher education and employment.

How you will be assessed?

Exam board – AQA 1350

Why should you study core maths?

Mathematical skills are becoming increasingly important in the workplace and in higher education - studying Core Mathematics will help students to keep up these essential skills. Core Mathematics at Exmouth would support your learning in subjects such as Psychology, Business Studies, Geography and the Sciences. It is not a requirement to study Core maths alongside these subjects, but it may help. Feel free to discuss the mathematical content with the course leader of your desired subject.

The qualification also carries UCAS points (20 points for an A grade). Additional entry requirements: Standard entry + a grade 5 in Maths.

For more information please see: Mr Ben Pike - Interim Head of Maths

“Without mathematics, there’s nothing you can do. Everything around you is mathematics. Everything around you is numbers.” – **Shakuntala Devi**

Further Mathematics

What you will study?

Further Mathematics is an additional A Level qualification taken in addition to the Mathematics A level. A level Mathematics is studied in Year 12 and Further Mathematics in Year 13. This is a highly challenging and highly regarded course. This qualification both broadens and deepens the mathematics covered in A level Mathematics and, for someone who enjoys mathematics, it provides a challenge and a chance to explore new and/or more sophisticated mathematical concepts. Students study Pure Mathematics as well as the applied units Statistics and Decision Mathematics. The topics covered build on each other lesson by lesson. Students must therefore show real commitment to the course with regard to attendance and completion of work.

How you will be assessed?

Exam board – AQA 7367

Why should you study further maths? Studying Further Mathematics is excellent preparation for university, especially if you wish to study Mathematics related subjects eg Engineering, Computing.

Additional entry requirements: Standard entry + a grade 7 in GCSE Mathematics, plus grade 7 in GCSE Physics/77in Double Science.

For more information please see: Mr Ben Pike - Interim Head of Maths

Mathematics

What you will study?

Students study pure mathematics and applied units in statistics and mechanics over two years. It will encourage and develop your range of mathematical skills and techniques. Your increased understanding of mathematics and mathematical processes will promote confidence and provide a strong foundation to progress to further study.

How you will be assessed?

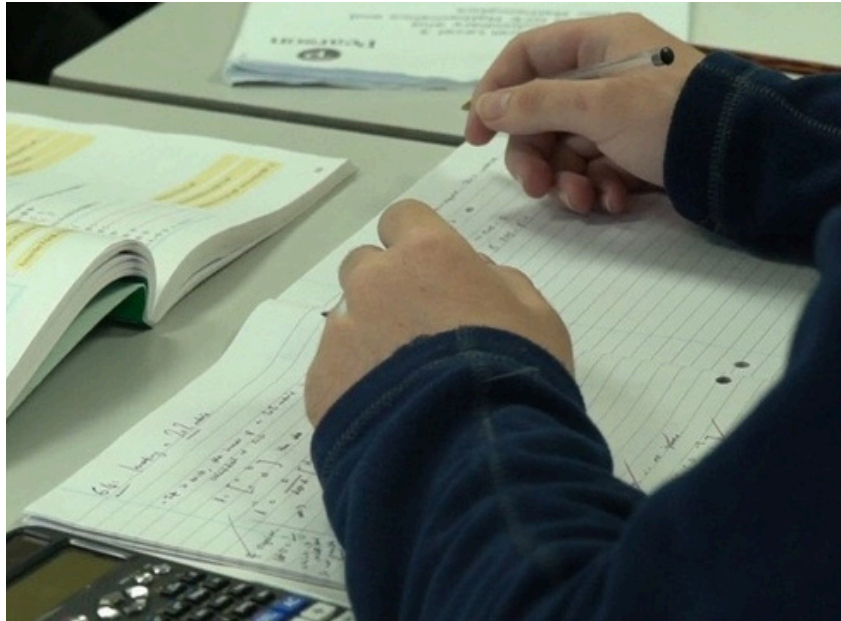
Exam board – AQA Maths - 7357

Why should you study maths?

Mathematics is a highly respected qualification and is a requirement of all mathematically based degrees and of many scientific and engineering courses. A Level Mathematics is accepted (with other subjects) as an appropriate qualification for entry to almost any career or degree course.

Additional entry requirements: Standard entry + a grade 6 in GCSE Mathematics.

For more information please see: Mr Ben Pike - Interim Head of Maths



Classical Civilisation

What you will study?

Our A Level course provides students with a broad and comprehensive knowledge of the Ancient Greeks and the Romans. Students have the opportunity to study ancient literature (in translation), and acquire an understanding of the history and culture of the classical world.

How you will be assessed?

Exam board – OCR – Specification H408 *The course is divided into three modules:* The World of the Hero enables students to study the Odyssey and the Aeneid, two poems that detail the lives of the mythological heroes who survived the Trojan War, while the Greek Theatre module explores both the content and production of some of the earliest recorded plays.

Our final part of the course, Politics of the Late Republic, looks at the increasingly turbulent politics of the Roman Republic, leading up to the creation of the Roman Empire. These three modules reflect the broad nature of Classical Civilisation at A Level: The World of the Hero is an especially insightful course when studied alongside A Level English Literature, and Greek Theatre enables thespians and dramatists to discover the origins of drama as we understand it today. Politics of the Late Republic examines both the history and the politics of Rome, and has a considerable amount of cohesion with A Levels in History or Politics.

Why should you study classics?

This subject is held in high regard by both universities and employers. As a rather uncommon A Level course, lots of employers and university admissions tutors value an A Level in Classical Civilisation: the course provides evidence of critical thinking skills, and the ability to write logical and well-structured arguments. Many UK universities run courses in Classics and subjects related to the ancient world.

Entry requirements Standard entry requirements for Level 3: 5 grade 4s at GCSE, including English Language and Maths.

For more information please see: Dr. Rachael Prior – Latin and Classics Teacher

French

What you will study?

An A level language builds on the core skills and topics taught at GCSE and looks in more detail at topics such as:

- Social issues and trends
- Political and artistic culture
- Grammar

In addition, students will study one literary text and one film from a prescribed list. The main aims are to ensure that students are fully prepared for the A Level exam whilst equipping them to be confident speakers able to converse in a variety of different situations.

How will you be assessed? Exam board – AQA

Paper 1 – reading, listening, translation skills

Paper 2 – essay paper on a film, novel or play Paper 3 – speaking exam All papers sat at the end of Year 2.

Mrs Burman says: Language is what makes us human and language learning allows us to share our ideas, thoughts and feelings with others and learn about new cultures; their customs, their traditions and their societies. By learning French, it means you have mastered a complex system of words, structures and grammar to effectively communicate with people from the vast number of French-speaking countries.

Why should you study French?

A language is looked upon favourably within the “working environment” and often language graduates earn more than their peers. Many of our language students have gone on to study at Russell groups universities and have embarked on courses such as: Medicine, Law, French & Spanish and Law and Spanish to name but a few.

Additional entry requirements: Standard entry + a grade 6 in GCSE French.

For more information please see: Mrs Rachel Burman - Acting Faculty Leader of Languages

Spanish

What you will study?

An A level language builds on the core skills and topics taught at GCSE and looks in more detail at topics such as:

- Social issues and trends
- Political and artistic culture
- Grammar

In addition, students will study one literary text and one film from a prescribed list.

The main aims are to ensure that students are fully prepared for the A Level exam whilst equipping them to be confident speakers able to converse in a variety of different situations.

How will you be assessed?

Exam board – AQA

Paper 1 – reading, listening, translation skills

Paper 2 – essay paper on a film, novel or play

Paper 3 – speaking exam

All papers sat at the end of Year 2.

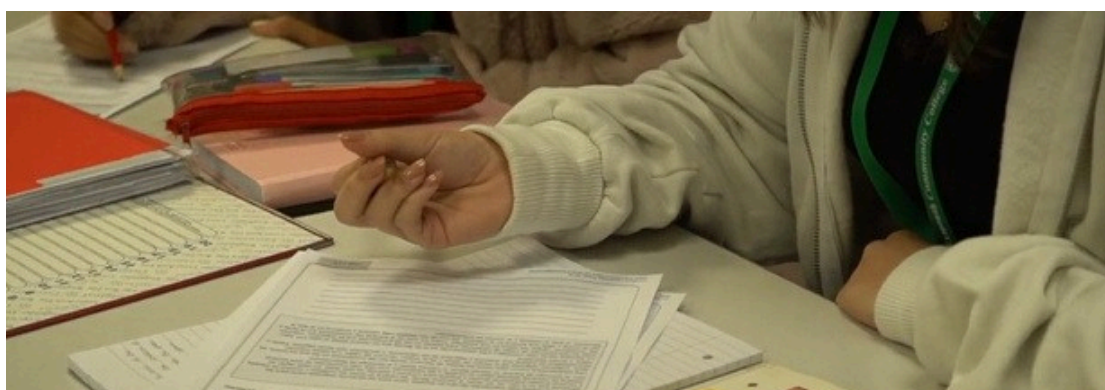
Why should you study Spanish?

A language is looked upon favourably within the “working environment” and often language graduates earn more than their peers. Many of our language students have gone on to study at Russell groups universities and have embarked on courses such as: Medicine, Law, French & Spanish and Law and Spanish to name but a few.

Additional entry requirements: Standard entry + a grade 6 in GCSE Spanish.

For more information please see:

Mrs Rachel Burman - Acting Faculty Leader of Languages



A Level Physical Education (PE)

What you will study?

A-Level PE is a 2-year course. It is suited to those who have a genuine interest in sporting excellence and the science, psychology and history behind it. A-Level PE is a challenging course, where application of your own sporting experience is pivotal in developing a sound understanding of key topics. Progression routes from this course include the armed forces, public services, physiotherapy, fitness instructor, sport and leisure management, PE teaching, sports science and coaching.

How you will be assessed?

Exam Board - AQA (7582)

The course is 70% theory and 30% practical.

Assessments

Paper 1: Factors affecting participation in physical activity and sport

What's assessed

- Section A: Applied anatomy and physiology
- Section B: Skill acquisition
- Section C: Sport and society

How it's assessed

- Written exam: 2 hours
- 105 marks
- 35% of A-level

Paper 2: Factors affecting optimal performance in physical activity and sport

What's assessed

- Section A: Exercise physiology and biomechanics
- Section B: Sport psychology
- Section C: Sport and society and technology in sport

How it's assessed

- Written exam: 2 hours
- 105 marks
- 35% of A-level

Non-exam assessment: Practical performance in physical activity and sport

What's assessed

- Students are assessed as a performer or coach in the full-sided version of one activity.
- Plus: written/verbal analysis and evaluation of performance

How it's assessed

- Internal assessment, external moderation
- 90 marks
- 30% of A-level

Additional entry requirements: Standard entry + a grade 6 in GCSE PE or 6 in GCSE Biology/6-6 in Double Science.

The course is extremely demanding both practically and theoretically, therefore, students **MUST** be taking part in a competitive sport/activity outside of College.

For more information please see:

Mr Stuart Lowe – Faculty Leader of Sport & Leisure

Mrs Katie Coult – KS5 PE Coordinator

“There’s no way around hard work. Embrace it.

You have to put in the hours because there is always something you can improve on” - Roger Federer



BTEC Level 3 National Diploma in Sport

What you will study?

The BTEC Level 3 National Diploma in Sport is a vocational qualification equivalent to 2 A-levels, completed over 2 years. The course is designed to provide learners with knowledge and understanding of the sport and active leisure sector. Through a combination of practical experience and written assignments, this qualification will equip learners with the skills and attributes needed to help achieve their goals, whether looking to progress to further qualifications or higher education, gain employment, or secure career progression within the sports industry.

How you will be assessed?

Exam board – Edexcel BTEC 2016 Specification

Programme of study

The course involves completing a variety of core and optional units, as detailed below. These units will comprise of both theoretical and practical elements.

Unit 1- Anatomy and Physiology -120 credits - *external exam*.

Unit 2 - Fitness training and programming for health, sport and well-being- 120 credits - *external exam*

Unit 3 - Professional development in the sports industry- 60 credits- internal coursework

Unit 4 - Sports Leadership- 60 credits- internal coursework

Unit 18- Work experience - 10 days, sports related, to be completed in the summer term of year 12

Unit 5 - Application of fitness testing- 60 credits - internal coursework

Unit 7 - Practical sports performance- 60 credits- internal coursework

Unit 22 - Investigating business in sport- 90 credits - *externally assessed*

Unit 23 - Skill acquisition in sport- 90 credits- internal coursework

Assessment

Learners will be Assessed in a variety of ways, including; external exams, in the workplace, written assignments, presentations, leadership and role play, allowing you to demonstrate your knowledge in a way that plays to your strengths.

Why should you study sport?

We also aim to offer you the opportunity to complete additional sport-related qualifications in order to help you gain employment, such as First Aid, Leadership courses and YMCA Certificate in Gym Instructing.

Progression routes from this course include the armed forces, public services, physiotherapy, fitness instructor, sport and leisure management, PE teaching, sports science and coaching.

Additional entry requirements: Standard entry + a grade 5 in GCSE PE or Merit in Health and Fitness, plus a grade 4 in Biology/4-4 in Double Science.

For more information please see:

Mr Stuart Lowe – Faculty Leader of Sport & Leisure

Mrs Katie Coult – KS5 PE Coordinator

BTEC Level 2 Extended Certificate in Sport

What you will study?

The BTEC Level 2 Extended Certificate in Sport is a vocational qualification equivalent to 3 GCSE's, completed over 1 year. Learners will develop knowledge and understanding of the sport and active leisure sector by applying their learning and skills in a work-related context. The vocational nature allows learners to take responsibility for their own learning and to develop skills that are essential for the workplace. Through a combination of practical experience and written assignments, this qualification will help learners to develop the skills and attributes needed to progress to the next stage of education, or employment.

How you will be assessed?

Exam Board - Edexcel BTEC 2018 Specification

Learners will be Assessed in a variety of ways, including; external exams, written assignments, presentations and practical performance, this will allow you to demonstrate your knowledge in a way that plays to your strengths.

Unit 1 - Fitness for sport and exercise - *external exam*- 30 credits

Unit 2 - Practical sports performance- internal coursework- 30 credits

Unit 3 - The mind and sports performance- internal coursework- 30 credits

Unit 4 - The sports performer in action- internal coursework- 30 credits

Unit 5 - Training for personal fitness- internal coursework- 30 credits

Unit 7 - Anatomy and physiology for sports performance- *external exam* - 30 credits

Unit 10 - Injury and the sports performer- internal coursework- 30 credits

Unit 11- Running a sports event- internal coursework- 30 credits

Unit 14 - Carry out a sports related project- internal coursework- 60 credits

Unit 15 - Designing exercise programmes- internal coursework- 60 credits

Unit 24 - Work experience in sport- Placement and internal coursework -60 credits

Additional entry requirements: Standard level 2 entry of 5 grade 3 or above including English and maths + a grade 3 in GCSE PE/Level 1 Distinction in Health and Fitness.

For more information please see:

Mr Stuart Lowe – Faculty Leader of Sport & Leisure

Mrs Katie Coult – KS5 PE Coordinator



Philosophy

What you will study?

This course will provide students with an opportunity to ask and consider all of the 'big questions' that people often wonder about. The course has four key elements:

- *Epistemology* - the epistemology module covers what the definition of knowledge is, as well as how much knowledge comes from perception and how much from reason. It also covers the idea of scepticism.
- *Moral Philosophy* - moral philosophy is often referred to as ethics. It's about right and wrong, good and bad. This module covers ethical theories, applications of these theories, and the meaning of moral language.
- *Metaphysics of God* - this module covers the concept of God as typically conceived by the three main monotheistic religions. It covers whether such a concept is possible as well as arguments for and against the existence of God.
- *Metaphysics of Mind* - philosophy of mind looks at what minds and mental states actually are. This module covers various theories which say the mind is a physical thing and others which argue it is non-physical.

How you will be assessed?

Exam board – AQA

Philosophy A Level is assessed by two 3 hour exams at the end of year 13.

Why should you study philosophy?

The skills learned in Philosophy include clear and analytical thinking, persuasive writing and speaking, innovative questioning and effective reasoning. These skills are highly sought after and are transferable to a range of careers, such as teaching, PR, communications, publishing, HR, advertising and many more.

Additional entry requirements: Standard entry + a GCSE grade 5 in English

Mrs Lowe says: For centuries philosophers have sought to figure out what is true and what it means to live a meaningful life. They have taught us to question our most basic assumptions and beliefs and asked us to explore the basis for our ethical decisions. Humans have been thinking about important questions of life and death, meaning, and purpose forever. I love philosophy for what it does to encourage us all to really think about the complexities of life.



Biology

What you will study?

By studying Biology, you will deepen your understanding of life on every scale – from rainforests to single antibiotic resistant bacteria, from organ systems to DNA and biochemistry. This highly respected qualification is divided into 8 diverse sections including 12 compulsory areas including Cells, Biological molecules, Mass Transport, Homeostasis, Genetics and Inheritance. There is a focus on practical work over the 2 years which will provide you with a wide range of skills at an advanced level. The course also focuses on wider skills including – literacy, numeracy and the ability to make connections between natural, social, economic and ethical fields.

How you will be assessed?

Throughout the course you will be assessed by your teachers through low stakes quizzing, in class questioning, practice exam questions and multi topic assessments. At the end of the course there are three two-hour exams that are marked by external examiners. You will also be assessed by your teacher throughout the course in required practical activity competence and develop a lab folder of practical evidence.

Exam board - AQA

Why should you study biology?

Aside from Biology being an amazing and interesting subject, A level Biology is a highly respected qualification. Careers directly related to Biology include medical professions, pharmacy, physiotherapy, biomedical engineering, research science (life sciences), microbiology, marine biology, conservation, and ecology, environmental management, food science, agricultural engineering and zoology. The transferable skills developed would also be useful in a diverse range of careers including: law, business analysis, psychology (Biology is a requirement for some Psychology degrees).

Additional entry requirements: Standard entry + grade 6 in Biology and Chemistry or 6-6 in Double Science and a 5 in GCSE maths.

Mr Oxley says: With small class sizes, teachers who know you and a collective A level Biology teaching experience of over 100 years, we at Exmouth Sixth Form are proud to prepare students for your next step in scientific advancement. Alongside lessons we carry out investigations and trips to enhance your learning and make the A level course an exciting and memorable experience for all students.

Chemistry

What you will study?

In this course, you will study areas of physical, organic and inorganic chemistry, reaction kinetics, energetic and thermodynamics, as well as analytical techniques and chemistry in the environment. You will gain an appreciation of important chemical processes and principles which are fundamental to our understanding of the world around us, learning how scientists investigate phenomena. The course is also heavily practical based and some questions in the final written assessments will assess your knowledge of practical procedures.

How you will be assessed?

Exam board - OCR specification A
Three written final exams at the end of year 13.

Paper 1 – covers physical chemistry elements and the periodic table and is worth 37% of the overall grade

Paper 2 - covers Organic chemistry and again is worth 37% of the final grade.

Paper 3 - is synoptic covering any area from the specification and is 26% of the final grade. The course is also heavily practical based and some questions in the final written assessments will assess your knowledge of practical procedures.

Why should you study chemistry?

You could go on to study for a higher education degree in a range of science based subjects such as chemistry, biochemistry, medicine, veterinary science, environmental science, pharmaceuticals, forensics, chemical engineering, mathematics. While students have also gone onto study non science subjects such as: classics, geography, economics, history, law, philosophy and English literature amongst many others. A scientific training also stands you in good stead for careers in a range of occupations from management to marketing.

Additional entry requirements: Standard entry + grade 6 GCSE in Maths, Grade 6 in Chemistry or 6-6 in Double Science.

Mr Gelling says: A Level Chemistry teaches you to be objective, analytical and methodical which in turn allows you to understand how much of the world and universe works. Studying Chemistry is one of the most profound and meaningful ways to understand the world around us and our place in it. Chemistry will shape our future for better or for worse through the development of new materials, drugs and exploitation of the planet's resources in the most sustainable way.

Physics

What will you study?

Physics is the study of matter and energy and how they interact with each other. Physics is not set in stone. It is constantly evolving and new theories, discoveries and ways of thinking gradually take the place of previous knowledge and understanding. These discoveries have a direct impact on everyday life. You will study a wide range of topics covering classical and modern Physics including particle physics, quantum mechanics, mechanics, fields, electricity, waves and astrophysics.

How will you be assessed?

Exam board - AQA

3 exams at the end of Year 13 with practical skills endorsement over two years

Why should you study physics?

Studying Physics allows you to gain a profound understanding of a beautifully complex Universe. It is a challenging and rewarding subject to study! Physics gives you a huge range of transferable skills which are highly sought after by employers and universities. Students who study Physics not only have the option of following a career or research in the subject but are also able to apply their learning to other subjects at university such as Engineering, Electronics or Meteorology. Other students study Physics because it is useful for careers in Medicine or Biochemistry. Due to the training in problem-solving and logical thought that Physics provides it is a highly regarded qualification and is an excellent subject choice for other careers such as law or accountancy.

Entry requirements

Standard entry requirements for Level 3 (5 GCSEs at Grade 4 including English Language and Maths), Grade 6 GCSE in Maths, Grade 6 in Physics or 6-6 in Double Science.

For more information please see: Mrs Hannah Dupain – Head of Physics

The school ensures all sixth-form students are well supported to complete their courses. It helps students to overcome any barriers to their learning.

Ofsted, 2024



Exmouth Community College
www.exmouthcollege.devon.sch.uk

01395 255660

