

# Curriculum Guide

## Health and Care Department – our offer



## GENERAL STATEMENT OF INTENT

### Welcome to the Health and Care Department

The Health and Care Department offers a broad curriculum to ensure there is a course available to suit any learner interested in the sector. The department prides itself on its results and excellent student satisfaction rates, with 100% of learners rating their subject as good or excellent in 2022.

Our curriculum offer can support learners to be aspirational and progress to university on completion of their Level 3 studies, with popular choices being nursing, midwifery, social work or primary education. Some learners will choose to go onto an apprenticeship or go straight into employment – the curriculum gives the students choices, and regardless of what students choose, the curriculum offers so much more than a qualification.

Work experience is a primary element of our Post 16 offer, giving students chances to boost their social capital and make connections with employers. The benefits can be wide reaching such as enhancing future prospects for work, providing feedback to enhance job or university applications, and boosting confidence and communication skills.

The curriculum is tailored towards the needs of ECC students and experiences, including those from disadvantaged backgrounds and students whose experiences of childhood and parenting may not be entirely positive. Content covers positive relationships, security, attachments, the impact of bullying and substance misuse for Key Stage 4 learners amongst lots more through to anti-discriminatory practice, empathy, ethical care and factors that affect children's healthy growth and brain development in Key Stage 5. The curriculum prepares learners for life and can support learners to become more thoughtful of their actions, such as the impact of kindness, compassion and empathy towards others. Direct quotes from students when talking about the curriculum include

- *"You understand more about people's context in the light of their life-events."*
- *"It brings things to reality."*
- *"It helps you understand society as a whole."*
- *"It will help you in life – in a career and as a parent."*

High aspirations for all students means that the most able learners will be stretched and challenged whilst personalised support will be provided to learners with special educational needs to ensure they have equal opportunities to engage with the curriculum and reach their full potential.

The impact of the department curriculum will enable its learners to make good progress and gain the skills they need to move onto their next step in life. The learning experience will be underpinned by the teaching of experienced staff with a broad range of vocational experience

and subject knowledge to support learners to progress from key stage 4 to key stage 5 and from key stage 5 to either Higher Education, employment, or training.

Seeing every student grow into independent thinkers and confident young people lie at the heart of the department. We want our learners to come to their lessons feeling inspired, happy, and confident to try new things. We want learners to make the connections between the theory they learn in the classroom and the wider world so that learning makes sense to them and has a clear purpose.

The Department prides itself on its involvement with outside agencies and guest speakers. This keeps the vocational element of all courses up to date and enhances the student experience.

Our overall aim is for every learner to leave their health and care course eager to continue with their learning, feel proud of their achievements, be kind and caring citizens, demonstrate good communication skills, know about their career options and have the qualifications needed to compete in a competitive workforce.



### **What is the relevance of Health and Care subjects?**

With an ageing population and a **global pandemic**, never in this lifetime has health and social care been so relevant. Together, the health and social care sectors employ one in ten of the working population. Demand for both health and social care is likely to rise and will continue to play a key role in UK society which means the demand for people to fill these vital jobs will increase. Job prospects within this sector are therefore plentiful and there are strong opportunities for progression.

Source - The Kings Fund (ND)

## KEY STAGE 4 OFFER

### BTEC Technical Award in Health and Social Care

#### What is a BTEC Level 1/Level 2 Tech Award?

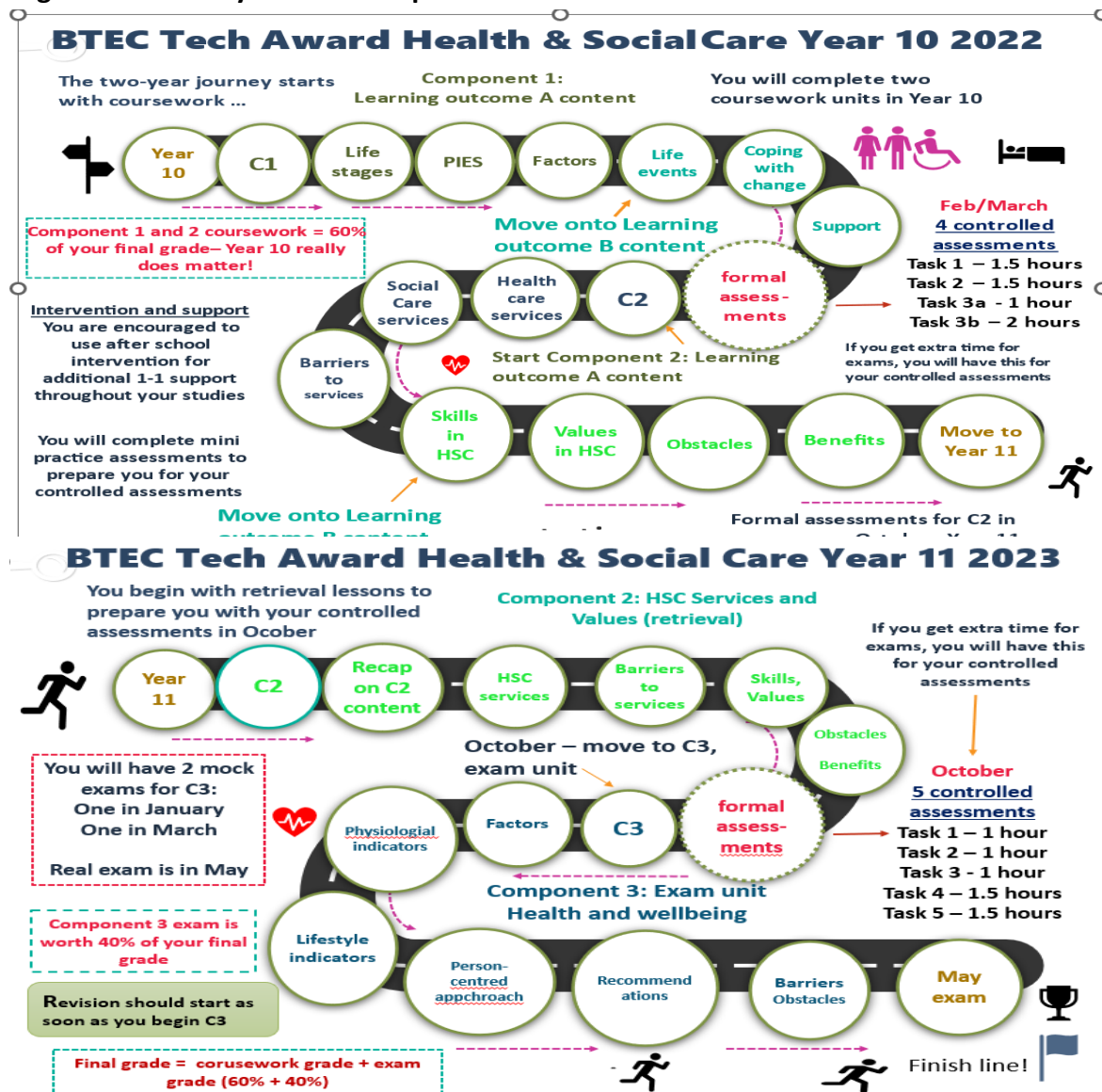
The BTEC Tech Award is the equivalent to one GCSE and offers an introduction to vocational learning. This qualification provides a valuable insight into working with people of all ages, enabling learners to make informed choices about their future career.

#### Who would this course suit?

This course would suit learners who have a genuine interest in working with people within some kind of helping capacity.



#### Programme of study - new 2022 specification



## Programme of study 2021 old specification

Students will complete three units over two years. 60% of the overall qualification will be coursework based, with 40% exam based

Unit	Unit Title	Form of Assessment	Year
1	Human Lifespan Development	Coursework	Year 10
2	Health and Social Care Services and Values	Coursework	Years 10 & 11
3	Health and Wellbeing	Exam	Year 11

### Student testimonials

*"I chose health and social care because it's something different in the curriculum and it's something for everyone. It's something you can look forward to when you have maths, English and science in a day and there's something new in most lessons where you can have fun. Also, over the 2 years you have days where you have visits and talks so that's another reason to take the subject! Some things I have really enjoyed about health and social have been the drugs misuse unit and the lifestyle indicator unit because there's quite a few activities you can do, and use things like peak flow meters and blood pressure monitors on your classmates. The teachers are amazing! Really supportive with every aspect of life, they're always willing to go out of their time to help and are just lovely people to be around."*

**Lewis Fulls, 2021: Year 11**

*"I chose health and social care because I wanted to learn more about my own development, how we change as we grow through the six life stages from infancy to later adulthood and how we can help and care for others. If you're thinking of a career in healthcare, then this subject is perfect for you: it will teach you the foundations of your learning about how people live and the skills, values and qualities needed to work in a healthcare based job. The teachers are extremely knowledgeable and know exactly what you need to do and know for your exams. They're always there to help answer any of your questions, whether it's supporting you with answers or helping you find the answers online or in the textbooks. It really doesn't matter if you're a boy or a girl (or anything else); if you have a passion for learning, understanding more about the people around you and caring for others, then go for it!"*

**Michael Freer, 2021: Year 10**

*"When I started post-16, I chose Health and Social care because I thought it would be interesting, I also liked the idea of doing coursework to take pressure off exams. After starting the course I enjoyed it so much it inspired me to become a nurse, and I have just received offers from the university's I've applied to! The teachers are really friendly and helpful and have helped me a lot over the past 2 years."*

**Oliva Watts, 2021: Year 13**

## KEY STAGE 5 OFFERS

### CACHE Level 2 Diploma for the Early Years Practitioner

#### What is an Early Years Diploma?

The Diploma in Early Years is a one-year, full time course equivalent to two GCSE's which can be taken alongside English and or maths resits. The course is 100% coursework-based and requires students to complete 250 hours of work experience over the duration of the year. **Learners will be given support in finding placements and will need to undergo a DBS check to ensure suitability of working with young children.**



#### Who would this course suit?

This course will suit learners who have a genuine interest in the learning and development of babies and children up to the age of 7 years and are interested in working in the early years sector. It is suited to students who did not get a minimum of 5 GCSE's at grade 4 or above, or who need to retake English and or maths. Upon successful completion of this qualification, learners can enter the workforce as a **qualified Level 2 Early Years Practitioner** or continue to study at Level 3.

#### Qualifications needed to get onto the course:

5 GCSE's (or equivalent) at grade 3 or above

#### Programme of study/assessment

Learners will complete 14 coursework units and **250 hours of work experience** over the duration of the year. Learners will be on placement one day a week and will have regular assessments from their teachers and supervisors. In order to pass the qualification, Learners must pass every unit and demonstrate a range of practical skills that show competence in working with babies and young children.

Unit	Unit Title
1	Roles and responsibilities of the Early Years Practitioner
2	Health and safety of babies and young children in the early years
3	Equality, diversity and inclusive practice in Early Years Settings
4	Safeguarding, protection and welfare of babies and young children in Early Years Settings
5	Understand how to support children's development

6	Support care routines for babies and young children
7	Support the planning and delivery of activities, purposeful play opportunities and educational programme
8	Promote play in an Early Years Setting
9	Support well-being of babies and young children for healthy lifestyles
10	Support babies and young children to be physically active
11	Support the needs of babies and young children with Special Educational Needs and Disability
12	Promote positive behaviour in Early Years Settings
13	Partnership working in the early years
14	Support the needs of the child in preparing for school

### **BTEC Level 3 National Extended Certificate in Children's Play, Learning and Development**

#### **What is the BTEC in CPLD?**

The BTEC Extended Certificate in CPLD is equivalent to one A-Level and offers an introduction into study of the early years sector. The qualification is recognised by universities and supports access to higher education. This course will need to be taken alongside other Level 3 courses. Alongside the course, students will need to complete 50 hours of work experience and complete a paediatric first aid course.



#### **Who would this course suit?**

This qualification is highly suited to students who have an interest in working in the early years sector with children under the age of 8 years. The qualification is particularly useful for learners who are interested in a career in primary school teaching.

#### **Qualifications needed to get onto the course:**

5 GCSE's (or equivalent) at grade 4 or above, including English and maths

#### **Programme of study/assessment**

Students will complete four units over two years as well as 50 hours of work experience. **Learners will be given support in finding placements and will need to undergo a satisfactory DBS check to ensure suitability of working with young children.** 70% of the overall qualification will exam based and 30% coursework based. To gain the full award, students must achieve competence in the following units.

Unit	Unit Title	Form of assessment
1	Children's Development	Exam
2	Development of Children's Communication, Literacy and Numeracy Skills	Exam
3	Play and Learning	Course work
5	Keeping Children Safe	Course work



## **BTEC National Extended Certificate and National Diploma in Health and Social Care**

### **BTEC National Extended Certificate in Health and Social Care**

The BTEC Extended Certificate in Health and Social Care is a two-year programme equivalent to **one A-Level**.

### **BTEC National Diploma in Health and Social Care**

The BTEC Extended Certificate in Health and Social Care is a two-year programme equivalent to **2 A-Levels**.

### **About these qualifications**

Both qualifications are recognised by universities and support access to higher education. The **Extended Certificate** will need to be taken alongside two other subjects and the **National Diploma** will need to be taken alongside one other subject.

The National Diploma will require students to complete 100 hours of work experience in a health and social care setting



### **Who would this course suit?**

This qualification is highly suited to students who have an interest in working in working with people in some kind of caring capacity. The qualification is particularly useful for learners who are interested in a career in nursing, midwifery, social work or support work.

### **Qualifications needed to get onto the course:**

5 GCSE's (or equivalent) at grade 4 or above, including English and maths

### **Programme of study/assessment – Extended Certificate in Health and Social Care**

Students will complete four units over two years. 60% of the qualification is exam based and 40% coursework based.

To gain the full award, students must achieve a minimum of a Pass in the following units:

Unit	Unit Title	Form of Assessment	Unit	Unit Title	Form of Assessment
1	Human Lifespan Development	Exam	5	Meeting Individual Care and Support Needs	Coursework
2	Working in Health and Social Care	Exam	12	Supporting Individuals with Additional Needs	Coursework

### Programme of study/assessment – National Diploma in Health and Social Care

Students will complete eight units over two years.

To gain the full award, students must achieve a minimum of a Pass in the following units:

Unit	Unit Title	Form of Assessment	Unit	Unit Title	Form of Assessment
1	Human Lifespan Development	Exam	6	Work Experience in Health and Social Care	Coursework
2	Working in Health and Social Care	Exam	7	Principles of Safe Practice in Health and Social Care	Coursework
4	Enquiries into Current Research in Health and Social Care	Controlled assessment	8	Promoting Public Health	Coursework
5	Meeting Individual Care and Support Needs	Coursework	12	Supporting Individuals with Additional Needs	Coursework

### Student testimonial

*"I chose Health and Social care as it covers a variety of content and you acquire skills that can help you in all stages of life. Health and Social care also opens up so many opportunities for a range of different career paths and goes well with other subjects. There have been many reasons why I have enjoyed this course, specifically the coursework element as it breaks up the work load throughout the year so that you don't feel overwhelmed. I really enjoyed meeting and listening to 'outside speakers' who brought awareness to their charitable work which was very inspiring and helpful as I was able to refer to it in my coursework.*

*I have had an offer from UWE to study Midwifery and this course motivated me to peruse this career as an option but it also made me aware of other career paths in the health and social care sector. The teachers are so considerate about you, your work and your future which is very encouraging and reassuring. The lessons are filled with different activities which makes the learning easier and brings the subject to life."*

**Joannah Lohmeyer-Browning, 2021: Year 13**

## More student testimonials

*“The teachers are so nice and helpful. I chose the subject because it would help me get to where I want to in my future career. It is an interesting and fun subject. I enjoy that there is a percentage of coursework as it means that there is not as much pressure on the exam. Overall I think it's a great subject and is fun”.*

**Jessica Gowling, 2021: Year 11**

*“I am currently in year 11 and happy that I chose health and social care. The subject has helped me understand real life issues, and the teachers have helped me whenever I have needed it. I wasn't very focused in lessons at the start, but I now value lesson time and have realised that I want to take it as an A level at ECC. It can help towards many qualifications for different future career choices, plus it's helped me in real life situations by educating me on things such as mental health and wellbeing. It can be quite a lot of writing, but the lessons are really engaging.”*

**Sophie Buckler, 2021: Year 11**

*“I chose health and social care because I was really interested in the topic and I knew it would help me in the future as I want to work with people (like being a teacher). Some things I have really enjoyed in health and social care are:*

- that it's coursework as well as exam so I get the opportunity to do both and gain experience in doing both. I especially like the coursework as you aren't under as much pressure and have more time to focus on it.*
- the topics in health and social care are very interesting and I've really enjoyed learning loads about other people and how to help.*
- The teachers are amazing and can help you anytime you're stuck, but also really good to talk to.”*

**Lily Wood, 2021: Year 11**

*“I chose health and social care because it is a very interesting subject and it has a good balance of course work and exams. Some things that I have really enjoyed about health and social care are small practicals in class but also learning about things that we can use everyday. The teachers are really supportive and are happy to help with any questions that you could have.”*

**Zoe Tooze, 2021: Year 11**

*“I really enjoy health and social care because I find it interesting and I've learnt a lot of useful things. You do a lot of coursework which I think is much better than tests, I also really like the teachers because they are very nice, considerate and they teach the subject well.”*

**Izzabella Jones, 2021: Year 11**

*"I chose Health and Social care in Year 11 because I prefer to do coursework. Doing coursework allows you to boost your overall grade and helps you to get onto better courses in the future. It helped me to get a grade of Distinction\* which allowed me to do Health and Social Care and Children's Play Learning and Development in post 16."*

**Amelia Dixon, 2021: Year 12**

*"I chose health and social because it, not only works well with my other subjects, but, because I enjoy learning about the topics covered, such as how to meet individual care needs and how people develop, and the factors involved. It is also a good subject as it can help you with a wide variety of jobs. As well as the topics covered, I am enjoying the split of exam coursework, especially considering both of my other subjects are exam based. The teachers are so lovely and supportive, smaller classes allow for much better and more personal feedback, which helps boost your learning."*

**Ellie Hunt, 2021: Year 12**

*"I chose Health and Social because I wanted a future career in nursing. I have been offered places at UWE University and Plymouth University and my teachers have been very helpful in the process of applying to these universities and setting a plan to help me meet the entry requirements."*

**Jacob Humphry, 2021: Year 13**

