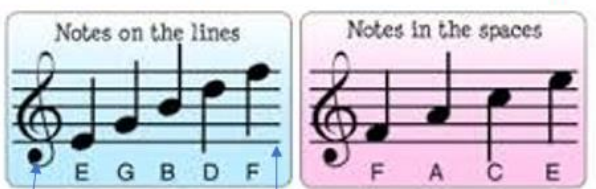


Knowledge Organiser: Music Theory Introduction

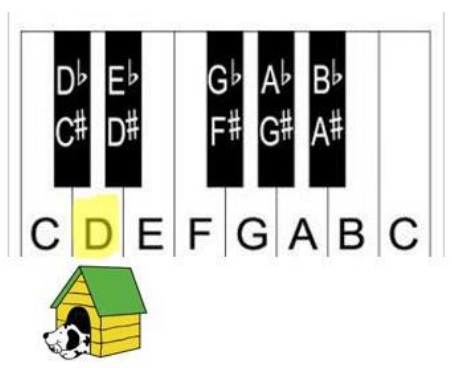


The notes are either on the line or in the space



Treble Clef

Stave (the 5 lines)



Learning to read  
MUSIC

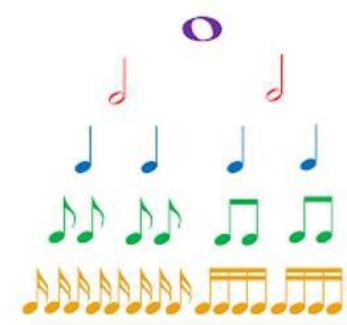
**PITCH**  
(high/low notes)

**RHYTHM**  
(long/short notes)

Finding the notes on the  
**KEYBOARD**

*The dog is in the kennel*  
(D is between two black notes)

**Musical ELEMENTS**  
(to describe and build music)



	Semibreve	4 beats
	Minim	2 beats
	Crotchet	1 beat
	Quaver	½ beat
	Semiquaver	¼ beat

Pitch	High / Low
Rhythm	Long / Short
Tempo	Speed
Dynamics	Volume
Texture	Layers of sound
Timbre	Type of sound
Tonality	Major/minor

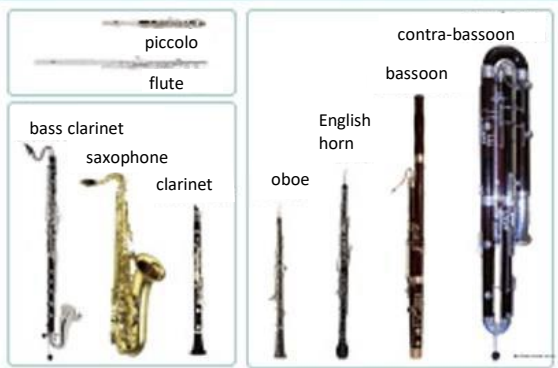


Knowledge Organiser: Instruments of the Orchestra

**STRING FAMILY**



**WOODWIND FAMILY**



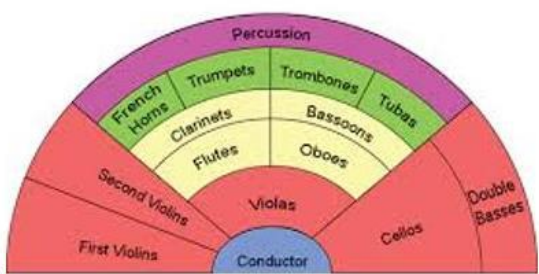
**The Orchestra**



Conductor

Did you know . . . ?  
The bigger the instrument, the lower the pitch.

Sections of the Orchestra



**BRASS FAMILY**



**PERCUSSION FAMILY**

